

# Performance Link

A monthly feature of the Angus Journal, "Performance Report" provides an overview of tests under way, with the top-performing bulls at the most recent weigh-in.

## Calhoun Bull Evaluation

### 112-day final report (Nov. 7, 2017)

The 48th Calhoun Bull Evaluation Program began June 26-27 with the delivery of 151 bulls representing five breeds to the Northwest Georgia Research and Education Center at Calhoun, Ga. The average on-test weight for the 103 Angus bulls was 873 lb., with overall on-test weights averaging 873 lb. Eligible bulls were born Sept. 1-Nov. 30, 2016.

**HIGH-ADG ANGUS** Lot 103; owner: Bridges Angus Farm, Phillip and Alan Bridges, Lexington, Ga.; sire: Plattemere Weigh Up K360; ADG: 4.98 lb.; ADG ratio: 133; WDA: 3.75 lb.; WDA ratio: 113; wt.: 1,618 lb.; SC: 37.5 cm

**HIGH-WDA ANGUS** Lot 53; owner: Taylor Angus, Danny Taylor, Adairsville, Ga.; sire: Quaker Hill Rampage 0A36; ADG: 4.09 lb.; ADG ratio: 109; WDA: 3.86 lb.; WDA ratio: 117; wt.: 1,345 lb.; SC: 40.5 cm

**ANGUS AVERAGES** (102 head) ADG: 3.74 lb.; WDA: 3.31 lb.; wt.: 1,294 lb.

**OVERALL AVERAGES** (149 head) ADG: 3.75 lb.; WDA: 3.29 lb.; wt.: 1,294 lb.

The sale was Dec. 1.

To access a state-by-state listing of current central bull tests, visit our

Virtual Library online at [www.api-virtuallibrary.com/](http://www.api-virtuallibrary.com/)

*CentralBullTests.htm*. The listing includes contact information, links

to test websites, current test schedules and dates of upcoming tests.

For more information contact Jason Duggin, Extension beef animal scientist, phone: 706-624-1403; cell: 706-728-4354; [jduggin@uga.edu](mailto:jduggin@uga.edu); or visit the website at [www.ugabeef.com/programs](http://www.ugabeef.com/programs).

## Green Springs Spring Bull Test

**112-day final report (Oct. 11, 2017)**  
The Green Springs Spring Bull Test at Nevada, Mo., weighed bulls off test Oct. 11, 2017. The test was a 112-day performance test with bulls grouped by breed and size as much as possible, offering an optimum growth environment. Bulls must be weaned and vaccinated. The spring test is for bulls born Aug. 1-Oct. 31, 2016.

Bulls were fed for a 14-day warm-up

period before the official test began. Bulls were fed a high-quality ration formulated by a qualified nutritionist and adequate for a targeted average daily gain (ADG) of 3.5 lb.

**HIGH-ADG ANGUS** Lot 17099; owner: 4N, Roger Nelson, Mountain Grove, Mo.; ADG: 4.96 lb.; ADG ratio: 108; WDA: 2.86 lb.; WDA ratio: 105; RFI: -2.4 lb.; wt.: 1,423 lb.; test index: 104; SC: 39 cm

**HIGH-WDA ANGUS** Lot 17136; owner: Dr. & Mrs. Norman Garton, Nevada, Mo.; ADG: 4.17 lb.; ADG ratio: 115; WDA: 4.02 lb.; WDA ratio: 147; RFI: 1.83 lb.; RFI ratio: 95; wt.: 1,570 lb.; test index: 116; SC: 40 cm

**BEST RFI ANGUS** Lot 17078; owner: H.

Tabor, Osceola, Mo.; ADG: 3.79 lb.; ADG ratio: 105; WDA: 3.08 lb.; WDA ratio: 112; RFI: -5.1; wt.: 1,225 lb.; test index: 111; SC: 39 cm

**HIGH-INDEXING ANGUS** Lot 17137; owner: George Garton, Nevada, Mo.; ADG: 3.88 lb.; ADG ratio: 107; WDA: 3.58 lb.; WDA ratio: 131; RFI: -2.00 lb.; wt.: 1,465 lb.; test index: 120; SC: 38 cm

The test sale took place Nov. 19.

For more information contact Kent Abele, owner, at 417-448-7416 or 417-448-7416; email him at [gsbulltest@gmail.com](mailto:gsbulltest@gmail.com), or visit the test website at [www.greenspringsbulltest.com](http://www.greenspringsbulltest.com).

## Virginia BCIA Culpeper Sr. Bull Test

**112-day final report (Oct. 31, 2017)**  
The Culpeper Sr. Bull Test put on by the Virginia Beef Cattle Improvement Association (BCIA) at Blacksburg, Va., began July 11 with starting weights on 111 bulls. There were 108 Angus bulls on test. The test was a 112-day test for bulls born Aug. 15-Nov. 30, 2016.

**HIGH-ADG ANGUS** Lot 66; owner: Spring Hill Farm, Greg and Becky Moore, Bridgeport, W.Va.; sire: VAR Discovery



## INAUGURAL ANGUS PRODUCTION SALE

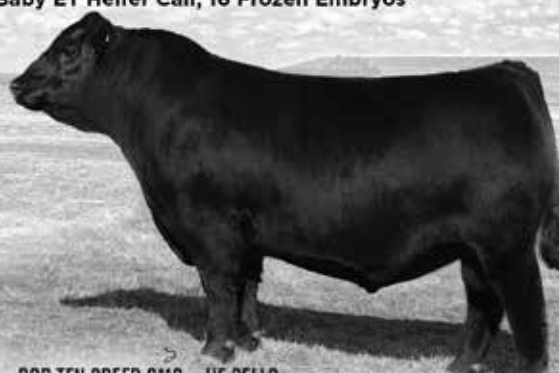
**SUNDAY, MAR. 4 • AT THE RANCH NEAR KAW CITY, OK • 11 AM LUNCH • 1 PM SALE**  
WITH SPECIAL GUESTS: NAYLOR CATTLE COMPANY, AUSTIN FAMILY ANGUS AND HOWELL ANGUS

### SELLING APPROXIMATELY 100 HEAD

58 Bulls: 21 Fall Yearlings & 37 Spring Yearlings, 40 Females: 12 Fall Yearling Bred Heifers, 19 Spring Yearling Open Heifers, 7 Cow/Calf Pairs & Bred Cows, 1 Baby ET Heifer Calf, 16 Frozen Embryos



**PA RECHARGE 7050 - HE SELLS**  
SAV RECHARGE 3436 X SAV PIONEER 7301 X SAV EMBLYNETTE 7566



**PAR TEN SPEED 6119 - HE SELLS**  
SAV TEN SPEED 3022 X SAV RESOURCE 1441

**FEATURED SIRES:** SAV Universal 4038, SAV Sensation 5615, SAV Seedstock 4838, SAV Resource 1441, SAV Renown 3439, SAV Recharge 3436, SAV Ten Speed 3022, SAV Priceless 3155, SAV Real Estate 3159 AAR Ten X 7008 SA, and SAV Platinum 0100

**FEATURED COW FAMILIES:** Abigale, Blackcap May, Elba, Emblynette, Erica, Duke Girl and Madame Pride

\*Guest Consignment Features include: Maternal sister to Coleman Charlo 0256 by SAV Bismarck 5682 and Embryo heifer calf from SAV Blackcap May 8051 by SAV Raindance 6848



JOE & PEGGY PAYNE, MAILING: PO BOX 427, NEWKIRK, OK, 74647  
RANCH LOCATION: 7162 NORTH PAYNE ROAD, KAW CITY, OK 74641  
HOME: (580) 362-3040 • MOBILE: (580) 761-4320  
BARN: (580) 362-1447 • JAY PAUL FAGAN: (580) 304-4079  
[PEGGY@PAYNEANGUSRANCH.COM](mailto:PEGGY@PAYNEANGUSRANCH.COM) • [JAY@PAYNEANGUSRANCH.COM](mailto:JAY@PAYNEANGUSRANCH.COM)

FREE DELIVERY ON BULLS IN THE CONTINENTAL UNITED STATES

[PAYNEANGUSRANCH.COM](http://PAYNEANGUSRANCH.COM) LIKE OUR FACEBOOK PAGE!

2240; ADG: 5.04 lb.; ADG ratio: 124; wt.: 1,280 lb.; station index: 107; sale index: 94; SC: 38 cm; frame: 6.1

**HIGH-TEST-INDEX ANGUS** Lot 77; owner: Silver Creek Angus, John Prekker, Danville; sire: RB Tour of Duty 177; ADG: 4.87 lb.; ADG ratio: 120; wt.: 1,555 lb.; station index: 115; sale index: 99; SC: 41.5 cm; frame: 6.8

**HIGH-SALE-INDEX ANGUS** Lot 6; owner: Echo Ridge Farm, C.W. and Shirley Pratt, Atkins, Va.; sire: GAR Sure Fire 6524; ADG: 4.29 lb.; ADG ratio: 105; wt.: 1,465 lb.; station index: 112; sale index: 101; SC: 35 cm; frame: 6.2

**ANGUS AVERAGES** (106 head) ADG: 4.07 lb.; wt.: 1,329 lb.

**OVERALL AVERAGES** (109 head) ADG: 4.06 lb.; wt.: 1,326 lb.

The test sale was Dec. 9 at Glenmary Farm, Rapidan, Va.

For more information contact Scott Greiner, extension beef specialist, at 540-231-9159; fax: 540-231-3713 or sgreiner@vt.edu; or Tom & Kim Nixon, owner/manager, Glenmary Farm, at 540-672-7396; fax: 540-672-3579 or glenmaryfarm@vabb.com. Information is also available on the test website, <http://bcia.aps.vt.edu>.

**University of Tennessee Senior Bull Test**

**84-day final report (Nov. 28, 2017)**

The University of Tennessee Bull Testing Program located at the Middle Tennessee Research and Education Center in Spring Hill accepted delivery of bulls for the senior bull test Aug. 22 and weighed a total of 90 bulls on test Sept. 4. Senior bulls must have been born Sept. 1-Dec. 20, 2016. There were 73 Angus bulls on test.

**HIGH-ADG ANGUS** Lot 58; owner: Mills Angus Farms, Cookeville; sire: Quaker Hill Rampage 0A36; ADG: 6.73 lb.; ADG ratio: 137; WDA: 4.05 lb.; WDA ratio: 120; wt.: 1,802 lb.

**HIGH-WDA ANGUS** Lot 60; owner: Mills Angus Farms; sire: Quaker Hill Rampage 0A36; ADG: 6.07 lb.; ADG ratio: 124; WDA: 4.09 lb.; WDA ratio: 122; wt.: 1,720 lb.

**ANGUS AVERAGES** (71 head) ADG: 5.00 lb.; WDA: 3.36 lb.; wt.: 1,260 lb.

**OVERALL AVERAGES** (88 head) ADG: 4.94 lb.; WDA: 3.35 lb.; wt.: 1,251 lb.

The sale was Jan. 18.

For more information contact David Kirkpatrick, professor of animal science, University of Tennessee, at 865-974-7294; fax: 865-974-0429 or fkirkpat@utk.edu; or Kevin Thompson, station manager, at 931-486-2129; fax: 931-486-0142. Test information is also available at <https://ag.tennessee.edu/AnimalScience/Pages/BullTestProgram.aspx>.

**2018 Clemson Bull Test 112-day final report (Dec. 12, 2017)**

Fifty-nine bulls were delivered to the 2018 Clemson Bull Test at the Clemson Beef Cattle Farm near Pendleton, S.C., Aug. 9. There were 19 senior Angus bulls and 13 junior Angus bulls on test. The bulls were

weighed on test Aug. 24 following a 14-day warm-up period.

**HIGH-ADG SENIOR ANGUS** Lot 43; owner: Leonard Fussell, Millers Creek, N.C.; sire: KCF Bennett Fortress; ADG: 4.82 lb.; ADG ratio: 124; WDA: 3.61 lb.; WDA ratio: 111; wt.: 1,685 lb.

**HIGH-WDA SENIOR ANGUS** Lot 53; owner: Oak Hill Farm, Six Mile, S.C.; sire: RB Tour of Duty 177; ADG: 4.18 lb.; ADG

ratio: 107; WDA: 3.75 lb.; WDA ratio: 116; wt.: 1,630 lb.

**HIGH-ADG JUNIOR ANGUS (TIE)** Lot 8; owner: Paul Boyd Angus Farm, Clover, S.C.; sire: Plattemere Weighup; ADG: 4.39 lb.; ADG ratio: 119; WDA: 3.44 lb.; WDA ratio: 105; wt.: 1,290 lb.

**HIGH-ADG (TIE) AND HIGH-WDA (TIE) JUNIOR ANGUS** Lot 77; owner: Currahee Cattle Co., Ken Whitfield, Toccoa, Ga.;

sire: Rito 303 of 9Q15 Prog; ADG: 4.38 lb.; ADG ratio: 119; WDA: 3.57 lb.; WDA ratio: 109; wt.: 1,405 lb.

**HIGH-WDA JUNIOR ANGUS (TIE)** Lot 66; owner: Broadway Cattle Farm, Monroe, N.C.; sire: Connealy 9933 2339; ADG: 3.96 lb.; ADG ratio: 108; WDA: 3.58 lb.; WDA ratio: 109; wt.: 1,430 lb.

**SENIOR ANGUS AVERAGES** (19 head)

(Continued on page 122)

43rd Annual **Wagonhammer Ranches**  
**TOTAL PERFORMANCE PRODUCTION SALE**

SELLING 175 REGISTERED ANGUS BULLS AND 15 OPEN ANGUS HEIFERS

*Wednesday, March 21, 2018*

SHAMROCK LIVESTOCK AUCTION, O'NEILL, NE



WAR Resource D533 Z504 – born 8/10/16  
S A V Resource 1441 x Styles Upgrade J59



WAR Payweight D502 B501 – born 7/25/16  
Basin Payweight 1682 x PA Safeguard 021



WAR Discovery D547 5079 – born 8/23/16  
V A R Discovery 2240 x K C F Bennett Architect M299



WAR Bullet Proof A386 E231 – born 2/26/17  
WAR Bullet Proof C357 x Sitz Upward 307R



WAR Black Granite C4002 E056 – born 2/5/17  
Connealy Black Granite x R B Active Duty 010



WAR Solution Y285 E317 – born 3/13/17  
KG Solution 0018 x Styles Upgrade J59

VISIT [WAGONHAMMER.COM](http://WAGONHAMMER.COM) FOR MORE INFORMATION AND SALE BOOK REQUESTS

OR YOU CAN CONTACT US BELOW.

VISITORS ALWAYS WELCOME!

**The Total Performance Brand**

Over 100 years strong



THE JAY WOLF FAMILY, OWNERS  
BOX 548, ALBION, NE 68620  
OFFICE: 402-395-2178

JOE EPPERLY, SEEDSTOCK MANAGER  
303-884-3900  
JOE@WAGONHAMMER.COM

**Performance Report** (continued from page 121)

ADG: 3.89 lb.; WDA: 3.24 lb.; wt.: 1,418 lb.

**JUNIOR ANGUS AVERAGES** (13 head) ADG: 3.68 lb.; WDA: 3.27 lb.; wt.: 1,249 lb.

The sale was Feb. 3, 2018. For additional information contact Steven Meadows, bull test program director, at [smdws@clermson.edu](mailto:smdws@clermson.edu) or at 864-633-9970 (cell) or Gary Burns, Clemson Bull Test manager at [gburns@clermson.edu](mailto:gburns@clermson.edu) or at 864-617-3402 (cell). Information is also available on the test website at [www.clemson.edu/extension/livestock/beef/bulltests-cubt/](http://www.clemson.edu/extension/livestock/beef/bulltests-cubt/).

**◆ Hinds Community College Bull Test On-test report (Oct. 17)**

Hinds Community College (HCC) in Raymond, Miss., has reported the beginning of the 2017-2018 HCC Bull Test. Bulls were received at the test station Oct. 3, 2017, for a start date of Oct. 17. Interim weigh dates were scheduled for Nov. 14, Dec. 12, and Jan. 9, 2018. Off-test weights are to be taken Feb. 6. The sale is scheduled for March 1.

For more information contact Kenneth Banes, farm manager, at 601-260-7850 (cell); or Lisa Whatley, office manager, at 601-857-3351 or email her at [lwhatley@hindsc.edu](mailto:lwhatley@hindsc.edu).

**◆ MBCIA Bull Test 56-day report (Jan. 4).**

The 2017-2018 Minnesota Beef Cattle Improvement Association (MBCIA) Bull Test received 99 bulls, 71 of them Angus, Oct. 28 to go on test Nov. 12, 2017. The 99 bulls averaged a 2.94-lb. ADG and had an average weight of 818 lb. The 112-day test is at Foundation Feeders Inc., Spring Grove, Minn. The bulls are being fed a high-protein total mixed ration (TMR) to enhance rumen stretch, ADG and fertility. Bulls eligible for the 133-day test must have been born Jan. 1-May 15, 2017.

**HIGH-ADG AND HIGH-INDEXING ANGUS** Lot 42; owner: Dustin Martin, Shady Hill Farms, Blue Earth, Minn.; sire: K Bar D Joe Canada 18Y; ADG: 5.36 lb.; WDA: 3.72 lb.; wt.: 1,350 lb.; test index: 130

**HIGH-WDA ANGUS** Lot 51; owner: Riley Bros. Farms, Darlington, Wis.; sire: RB World Wide 167-31; ADG: 4.41 lb.; WDA: 4.15 lb.; wt.: 1,250 lb.; test index: 123

**OVERALL AVERAGES** (92 head) ADG: 3.75 lb.; WDA: 3.24 lb.; wt.: 1,031 lb.

Off-test weights were to take place Jan. 19. The sale is scheduled for March 17 in Jackson, Minn.

For more information contact Ron Holty, test station manager, at 507-498-5839; cell: 507-429-7963 or [ronholty@gmail.com](mailto:ronholty@gmail.com).

**◆ WCA All-Breed Bull Test 60-day report (Dec. 30, 2017)**

The 25th annual Washington

Cattlemen's Association (WCA) All-Breed Bull Test began Nov. 2 with the initial weigh-in of 107 bulls consisting of 74 Angus, 17 Hereford, 3 Red Angus, six Angus composites, and eight Simmental. The Angus bulls had an average weight of 817 lb.

The bulls will be fed under the

supervision of Bob and Nina Lundgren at their Bonina Feed Facility at Eltopia.

Bulls eligible for the 120-day test were born Jan. 1-March 31, 2017.

**HIGH-ADG ANGUS** Lot 124; owner: Dutch Flat Angus, Pomeroy; sire: Kesslers Mondarch 5048; ADG: 5.25 lb.; WDA: 3.13 lb.; wt.: 1,060 lb.


**HIGH-WDA ANGUS** Lot 95; owner: Unruh Angus Ranch, Warden; sire: Quaker Hill Rampage 0A36; ADG: 1.53 lb.; WDA: 3.72 lb.; wt.: 1,270 lb.

**HIGH-ADG CE ANGUS** Lot 97; owner: Weidenbach Farms LLC, Mount Vernon; sire: Kesslers Final Answer 2814; ADG: 4.32 lb.; WDA: 3.42 lb.; wt.: 1,075 lb.

# SELECT WITH CONFIDENCE..... PLUS!

*For 50 years, the Benoit cowherd has been selected with high expectations for reproductive efficiency, longevity, and superior performance.*

**40 SONS & 10 DAUGHTERS SELL ON MARCH 15**



DAM OF CONFIDENCE PLUS

**CONNELY CONFIDENCE PLUS - 17585576**

CED	BW	WW	YW	SC	DOC	HP	CEM	MILK	
+15	-.9	+66	+124	-.02	+24	+12.3	+14	+26	
CW MARB RE \$W \$B									
+55	+.70	+.88	+69.07	+165.87					

- "PLUS" HAS A UNIQUE COMBINATION OF CALVING EASE & GROWTH.
- TOP 3% OF THE BREED FOR CED
- TOP 4% OF THE BREED FOR CEM, RE, \$F & \$B
- THE DAM OF CONFIDENCE PLUS, ELBANNA OF CONANGA 1209, IS THE \$125,000 PICK OF THE DAMS FROM THE 2016 CONNEALY ANGUS SALE.

**E&B PLUS 796 - 18873015**




**CONFIDENCE PLUS SON**  
 CED 12 / BW -.5 / WW 81 / YW 137 / MILK 24 / SC .34  
 CW 62 / MARB .56 / RE 1.04 / FAT .024 / \$W 87.55 / \$B 168.75  
 Top 1% for WW, YW & \$W · Top 2% for RE & \$F  
 Top 3% for CW & \$B · He Sells March 15

**E&B LADY PLUS 753 - 18890143**




**CONFIDENCE PLUS DAUGHTER**  
 CED 17 / BW -2.1 / WW 52 / YW 96 / MILK 26  
 SC .83 / CW 24 / MARB .70 / RE .59  
 FAT .059 / \$W 61.53 / \$B 116.97  
 Top 1% for CED · She Sells March 15

**E&B PLUS 705 - 18872980**



**CONFIDENCE PLUS SON**  
 CED 11 / BW .1 / WW 62 / YW 119 / MILK 28  
 SC .65 / CW 53 / MARB .38 / RE .79  
 FAT -.009 / \$W 69.52 / \$B 150.95  
 Top 10% for YW, CW, RE, \$W, \$F, \$B  
 He Sells March 15

**E&B LADY PLUS 7109 - 18890164**



**CONFIDENCE PLUS DAUGHTER**  
 CED 13 / BW 0 / WW 79 / YW 142 / MILK 26  
 SC -.02 / CW 70 / MARB .52 / RE .85  
 FAT -.002 / \$W 82.77 / \$B 168.39  
 Top 1% for WW, YW, CW, \$W, \$F  
 She Sells March 15

**BENOIT ANGUS RANCH · ESBON, KS · 888-870-BULL · [EBENOIT@RURALTENET](mailto:EBENOIT@RURALTENET) · [WWW.BENOITANGUS.COM](http://WWW.BENOITANGUS.COM)**

**HIGH-WDA ANGUS** Lot 141; owner: Eshelman Angus; sire: SandPoint Butkus X797; ADG: 3.98 lb.; WDA: 3.58 lb.; wt.: 1,200 lb.

**ANGUS AVERAGES** (71 head) ADG: 3.13 lb.; WDA: 3.01 lb.; wt.: 1,014 lb.

The test sale is scheduled for March 22, 2018.

When the bulls are weighed off test Feb. 28 and March 1, 2018, breeding soundness exams, semen tests and ultrasound data will be compiled.

Genetic profile enhancement through DNA samples will be used on many of the bulls selling.

Bulls can be viewed at any time at the

Bonina facility. Interim reports and sale information are available by contacting the WCA office at 509-925-9871, at [wacattle@kvalley.com](mailto:wacattle@kvalley.com); on the WCA website, [www.washingtoncattlemen.org](http://www.washingtoncattlemen.org); or via sale manager Kendall Cattle Sales at 208-858-2163, [kendall@potlatch.com](mailto:kendall@potlatch.com).

**IBEP Winter Test 63-day report (Jan. 23)**

A total of 173 bulls and 17 get-of-sire groups were delivered to the Feldun-Perdue Ag Center near Bedford, Ind., for the 2017 Indiana Beef Evaluation Program (IBEP) Winter Test. Angus, Hereford, Red Angus, SimAngus, Simmental, Maine-Anjou, Lim-Flex and Charolais are represented in the test.

**HIGH-ADG AND HIGH-INDEXING ANGUS** Lot 5; owner: Bill Washburn, Olney, Ill.; sire: Quaker Hill Rampage 0A36; ADG: 5.32 lb.; ADG ratio: 138; WDA: 3.94 lb.; WDA ratio: 121; wt.: 1,465 lb.; test index: 131

**HIGH-WDA ANGUS** Lot 29; owner: von Leer Farm, Mitchell, Ind.; sire: MW 964 Hoover Dam 11; ADG: 4.37 lb.; ADG ratio: 113; WDA: 4.03 lb.; WDA ratio: 124; wt.: 1,290 lb.; test index: 118

**ANGUS AVERAGES** (130 head) ADG: 3.86 lb.; WDA: 3.25 lb.; wt.: 1,103 lb.

**OVERALL AVERAGES** (183 head) ADG: 3.83 lb.; WDA: 3.24 lb.; wt.: 1,094 lb.

The bulls were scheduled to be weighed again Feb. 20, 2018, and will be weighed off test March 26. Bulls will sell April 20 in the 76th IBEP Bull Sale and Springville Feeder Auction Association Bred Heifer Sale.

For more information contact Terry Stewart at [tstewart@purdue.edu](mailto:tstewart@purdue.edu) or 765-494-0138; fax: 765-494-9346; Brad Shelton, test station manager, at 812-279-8554 or [sheltonb@purdue.edu](mailto:sheltonb@purdue.edu); or Donna Lofgren, performance records and website, at [dlofgren@purdue.edu](mailto:dlofgren@purdue.edu).

Information is available on the website at [www.ansc.purdue.edu/ibep](http://www.ansc.purdue.edu/ibep).

**Nebraska Bull Test 60-day report (Dec. 12, 2017)**

The Nebraska Bull Test, conducted at Rohde Farms, Mason City, Neb., reported that consignors delivered 125 Angus bulls, including 51 calving-ease bulls, that were weighed on test Oct. 13-14 for the start of the 2017-2018 test.

**HIGH-ADG CALVING-EASE ANGUS** Lot 71CE; owner: Reiter Angus, Chris and Amber Reiter, Miller; sire: Western Cut; ADG: 6.28 lb.; ADG ratio: 143; WDA: 3.74 lb.; WDA ratio: 110; wt.: 1,254 lb.

**HIGH-WDA CALVING-EASE ANGUS** Lot 46CE; owner: Pope Farms, Jeff Pope, Ravenna; sire: Connealy Final Solution; ADG: 5.29 lb.; ADG ratio: 120; WDA: 3.92 lb.; WDA ratio: 115; wt.: 1,066 lb.

**HIGH-ADG AND HIGH-WDA ANGUS** Lot 89; owner: Double D Angus, Linwood; sire: O'Neill's Black Bardolier; ADG: 6.88 lb.; ADG ratio: 146; WDA: 4.28 lb.; WDA ratio: 118; wt.: 1,394 lb.

**ANGUS CALVING-EASE AVERAGES** (51 head) ADG: 4.41 lb.; WDA: 3.41 lb.; wt.: 1,061 lb.

(Continued on page 124)

# BENOIT ANGUS RANCH

**E&B PAYWEIGHT 790 - 18922350**



BASIN PAYWEIGHT SON  
CED 12 / BW .1 / WW 72 / YW 128 / MILK 33 / SC 1.59  
CW 53 / MARB .70 / RE .54 / FAT .061 / \$W 86.09 / \$B 158.61  
Top 1% for \$W · Top 2% for \$F  
Top 3% for WW & YW · He Sells March 15

- FREE DELIVERY
- 1ST SEASON BREEDING GUARANTEE
- ALL CATTLE SELLING ARE PARENT VERIFIED
- ALL CATTLE SELL WITH GENOMIC ENHANCED EPDs
- REPEAT BUYER DISCOUNT
- CATTLE FED NO CREEP FEED

**SIRES INCLUDE:**

**CONFIDENCE PLUS · GAR SURE FIRE  
CONNEALY TEMPLATE · BARSTOW CASH · WESTERN CUT  
VAR INDEX · PAYWEIGHT 1682 · SYGEN FATE  
AAR TEN X · ANGUS VALLEY · RAMPAGE · GAR PROPHET**

**E&B WESTERN CUT 702 - 18875264**



WESTERN CUT SON  
CED 11 / BW -1.4 / WW 66 / YW 114 / MILK 33  
SC .10 / CW 52 / MARB .59 / RE .85  
FAT .012 / \$W 79.34 / \$B 158.84  
Top 1% for \$W · He Sells March 15

**E&B FATE 746 - 18876755**



SYDGEN FATE SON  
CED 8 / BW 1.3 / WW 64 / YW 116 / MILK 38  
SC 1.71 / CW 60 / MARB .60 / RE 1.08  
FAT .008 / \$W 80.00 / \$B 161.13  
Top 1% for Milk, RE, \$W · He Sells March 15

**E&B TEMPLATE 739 - 18872995**



CONNEALY TEMPLATE SON  
CED 6 / BW 3.1 / WW 70 / YW 129 / MILK 29  
SC 1.43 / CW 61 / MARB .11 / RE .77  
FAT -.004 / \$W 71.44 / \$B 130.42  
Top 5% for WW, YW, CW, \$W · He Sells March 15

**E&B LADY INDEX 728 - 18894768**



VAR INDEX DAUGHTER  
CED 13 / BW .1 / WW 59 / YW 111 / MILK 35  
SC .08 / CW 43 / MARB .39 / RE .92  
FAT -.009 / \$W 67.51 / \$B 136.34  
Top 5% for CED, RE, \$W · She Sells March 15

**E&B LADY CASH 7181 - 18893581**



BARSTOW CASH DAUGHTER  
CED 7 / BW 2.1 / WW 66 / YW 128 / MILK 25  
SC 1.63 / CW 57 / MARB -.10 / RE 1.04  
FAT -.016 / \$W 65.39 / \$B 130.46  
6 Full Brothers Sell · She Sells March 15

**E&B LADY SURE FIRE 7160 - 18894763**



GAR SURE FIRE DAUGHTER  
CED 13 / BW 2.1 / WW 63 / YW 117 / MILK 24  
SC 1.91 / CW 41 / MARB 1.20 / RE .72  
FAT .030 / \$W 64.53 / \$B 145.07  
Top 4% SC, HP, Marb, \$G · She Sells March 15



For more information, please contact:  
1-888-870-BULL

Everett & Bonnie Benoit (785) 725-3231  
Doug Benoit (785) 545-6806 · Chad Benoit (785) 545-8095  
[ebbenoit@ruraltel.net](mailto:ebbenoit@ruraltel.net) · [www.BenoitAngus.com](http://www.BenoitAngus.com)  
621 Hwy. 36 · Esbon, KS 66941

**Performance Report** (continued from page 123)

**ANGUS AVERAGES** (74 head) ADG: 4.73 lb.; WDA: 3.63 lb.; wt.: 1,145 lb.

**90-day report (Jan. 10)**

**HIGH-ADG CALVING-EASE ANGUS**  
Lot 71CE; owner: Reiter Angus, Chris and Amber Reiter, Miller; sire: Western Cut; ADG: 5.52 lb.; ADG ratio: 135; WDA: 3.76 lb.; WDA ratio: 110; wt.: 1,368 lb.

**HIGH-WDA CALVING-EASE ANGUS**  
Lot 46CE; owner: Pope Farms, Jeff Pope, Ravenna; sire: Connealy Final Solution; ADG: 5.00 lb.; ADG ratio: 123; WDA: 3.97 lb.; WDA ratio: 116; wt.: 1,194 lb.

**HIGH-ADG AND HIGH-WDA ANGUS**  
Lot 89; owner: Double D Angus, Linwood; sire: O'Neill's Black Bardolier; ADG: 6.24 lb.; ADG ratio: 146; WDA: 4.33 lb.; WDA ratio: 120; wt.: 1,536 lb.

**ANGUS CALVING-EASE AVERAGES (52 HEAD)** ADG: 4.08 lb.; WDA: 3.41 lb.; wt.: 1,158 lb.

**ANGUS AVERAGES** (72 head) ADG: 4.27 lb.; WDA: 3.60 lb.; wt.: 1,244 lb.

Final weights were scheduled for Feb. 9-10. The test sale will be March 28 at Broken Bow Livestock, Broken Bow, Neb.

For more information contact Mick Phillips, test manager, at 308-764-2378 or on sale day 308-764-7255 or Shane Rohde at 308-212-0157; or visit the test website at [www.nebraskabulltest.com](http://www.nebraskabulltest.com).

**UBIA Bull Test**

**Mid-test report (Dec. 12, 2017)**

The Utah Beef Improvement Association (UBIA) received junior and senior bulls Oct. 2 at Kenison Farm and Feedlot, Levan. Bulls entered in the senior test must have been born Sept. 1-Dec. 31, 2016. Bulls entered in the junior test must have been born Jan. 1-March 15, 2017. There are 159 junior Angus bulls and 10 senior Angus bulls on test. Interim weights were scheduled for Jan. 9, with bulls weighed off test Feb. 6.

**HIGH-ADG AND HIGH-INDEXING JUNIOR ANGUS** Lot 93; owner: Larsen Angus, Holden; sire: Sitz Investment 660Z; ADG: 5.71 lb.; ADG ratio: 174; WDA: 3.57 lb.; wt.: 1,205 lb.; sale ratio: 163

**HIGH-WDA JUNIOR ANGUS** Lot 99; owner: Lisonbee Angus Ranch, Roosevelt; sire: Basin Payweight 1682; ADG: 4.38 lb.; ADG ratio: 133; WDA: 3.97 lb.; wt.: 1,150 lb.; sale ratio: 132

**HIGH-ADG AND HIGH-INDEXING SENIOR ANGUS** Lot 232; owner: 5C Livestock, Redmond; sire: Coleman Charlo 0256; ADG: 4.06 lb.; ADG ratio: 127; WDA: 2.80 lb.; wt.: 1,015 lb.; sale ratio: 119

**HIGH-WDA SENIOR ANGUS** Lot 240; owner: Larsen Angus; sire: AAR Ten X 7008 SA; ADG: 2.10 lb.; ADG ratio: 66; WDA: 3.26 lb.; wt.: 1,145 lb.; sale ratio: 80

**JUNIOR ANGUS AVERAGES** (169 head) ADG: 3.28 lb.; wt.: 1,118 lb.

**OVERALL JUNIOR AVERAGES** (230 head) WDA: 3.06 lb.; wt.: 1,108 lb.

**OVERALL SENIOR BULL AVERAGES** (20 head) WDA: 3.20 lb.; wt.: 1,110 lb.

**84-day report (Jan. 9)**

**HIGH-ADG AND HIGH-INDEXING JUNIOR ANGUS** Lot 93; owner: Larsen

Angus, Holden; sire: Sitz Investment 660Z; ADG: 4.94 lb.; ADG ratio: 153; WDA: 3.55 lb.; wt.: 1,300 lb.; sale ratio: 146

**HIGH-WDA JUNIOR ANGUS** Lot 99; owner: Lisonbee Angus Ranch, Roosevelt; sire: Basin Payweight 1682; ADG: 4.05 lb.; ADG ratio: 126; WDA:

3.92 lb.; wt.: 1,245 lb.; sale ratio: 125  
**HIGH-ADG AND HIGH-INDEXING SENIOR ANGUS** Lot 232; owner: 5C Livestock, Redmond; sire: Coleman Charlo 0256; ADG: 4.20 lb.; ADG ratio: 131; WDA: 2.92 lb.; wt.: 1,140 lb.; sale ratio: 123

**HIGH-WDA SENIOR ANGUS** Lot 239;

# ANNUAL BULL SALE TUESDAY, MARCH 13, 2018

## JAMES X ANGUS

SALE STARTS AT 1 P.M.  
ALMA LIVESTOCK AUCTION, ALMA, NE



**SAV Renown 3439**



**BarStow Cash**

- **FIRST BREEDING SEASON GUARANTEE**
- **Top 35% of Bull Crop SELL!**
- **100% AI Sired**
- **All of the fall bulls are the product of embryo transfer**
- **FREE Delivery in NE & KS**
- **Volume Discounts**

**NEW**  
**Genomic**  
**Enhanced**  
**EPDs**

[WWW.JAMESANGUSRANCH.COM](http://WWW.JAMESANGUSRANCH.COM)

owner: Lowe Livestock, Toquerville; sire: SAV Thunderbird 9061; ADG: 3.24 lb.; ADG ratio: 101; WDA: 3.20 lb.; wt.: 1,200 lb.; sale ratio: 103

**JUNIOR ANGUS AVERAGES** (169 head) ADG: 3.22 lb.

**OVERALL JUNIOR AVERAGES** (230 head) ADG: 3.02 lb.

**OVERALL SENIOR BULL AVERAGES** (20 head) ADG: 3.18 lb.

Bulls were to be weighed off test Feb. 6. The test sale is scheduled for March 17, 2018.

For more information contact Kim Chapman, Utah State University Extension area animal scientist, at

435-892-0474 or kimc@ext.usu.edu; or Dale Kenison at 435-250-0090; or visit the test website, [www.ubiabulls.com](http://www.ubiabulls.com).

**Southwest Virginia Bull Test 56-day report (Dec. 19, 2017)**

The junior and senior tests of the Southwest Virginia Beef Cattle

Improvement Association (BCIA) Bull Test, are conducted simultaneously at Hillwinds Farm, Dublin, Va. Senior bulls must have been born Sept. 1-Dec. 31, 2016. Junior bulls must have been born Jan. 1-March 31, 2017. Entries for both divisions were due Sept. 4. Delivery was accepted Oct. 3 at Hillwinds Farm. A total of 92 senior bulls and 143 junior bulls went on test Oct. 24.

The senior Angus bulls began the test with an average weight of 1,012 lb. The junior Angus bulls weighed on test with an average weight of 746 lb.

**HIGH-ADG AND HIGH-WDA SENIOR ANGUS** Lot 17; owner: J&M Windy Acres, Mike Connatser, Maryville, Tenn.; sire: VAR Discovery 2240; ADG: 4.95 lb.; ADG ratio: 133; WDA: 3.32 lb.; WDA ratio: 117; wt.: 1,270 lb.

**HIGH-ADG JUNIOR ANGUS** Lot 166; owner: Virginia Tech Beef Center, Blacksburg; sire: Barstow Bankroll B73; ADG: 4.27 lb.; ADG ratio: 181; WDA: 3.17 lb.; WDA ratio: 114; wt.: 1,040 lb.

**HIGH-WDA JUNIOR ANGUS** Lot 90; owner: Silverado Cattle Co., Glenn and Rachel Covington, Orlean, Va.; sire: Schiefelbein Effective 61; ADG: 2.50 lb.; ADG ratio: 106; WDA: 3.34 lb.; WDA ratio: 120; wt.: 1,035 lb.

**ANGUS SENIOR AVERAGES** (55 head) ADG: 3.71 lb.; WDA: 2.83 lb.; wt.: 1,209 lb.

**OVERALL SENIOR AVERAGES** (92 head) ADG: 3.30 lb.; WDA: 2.75 lb.; wt.: 1,197 lb.

**ANGUS JUNIOR AVERAGES** (91 head) ADG: 2.36 lb.; WDA: 2.78 lb.; wt.: 873 lb.

**OVERALL JUNIOR AVERAGES** (143 head) ADG: 2.48 lb.; WDA: 2.83 lb.; wt.: 884 lb.

**84-day report (Jan. 16)**

**HIGH-ADG AND HIGH-WDA SENIOR ANGUS** Lot 17; owner: J&M Windy Acres, Mike Connatser, Maryville, Tenn.; sire: VAR Discovery 2240; ADG: 4.90 lb.; ADG ratio: 127; WDA: 3.42 lb.; WDA ratio: 117; wt.: 1,405 lb.

**HIGH-ADG JUNIOR ANGUS** Lot 105; owner: Pratt Cattle Co., Atkins, Va.; sire: Barstow 44 Teammate; ADG: 4.39 lb.; ADG ratio: 147; WDA: 3.31 lb.; WDA ratio: 114; wt.: 1,195 lb.

**HIGH-WDA JUNIOR ANGUS** Lot 124; owner: Black Creek Farm, Rural Retreat, Va.; sire: KCF Bennett Fortress; ADG: 3.58 lb.; ADG ratio: 120; WDA: 3.44 lb.; WDA ratio: 118; wt.: 1,065 lb.

**ANGUS SENIOR AVERAGES** (54 head) ADG: 3.86 lb.; WDA: 2.91 lb.; wt.: 1,324 lb.

**OVERALL SENIOR AVERAGES** (91 head) ADG: 3.68 lb.; WDA: 2.85 lb.; wt.: 1,320 lb.

**ANGUS JUNIOR AVERAGES** (91 head) ADG: 2.99 lb.; WDA: 2.90 lb.; wt.: 992 lb.

**OVERALL JUNIOR AVERAGES** (142 head) ADG: 2.96 lb.; WDA: 2.92 lb.; wt.: 994 lb.

## SELLING 90 BULLS

**(approximately 35 Fall Bulls and 55 Spring Bulls) and 10 Open Commercial Heifers**

*The fall bulls are new this year!*

SOME OF THE FEATURED SIRES: Barstow Cash; JMB Traction 292; SAV Renown; Mohnen Substantial 272; KM Broken Bow 002; Connealy Greeley; VAR Discovery 2240; Vision Unanimous 1418; VAR Generation 2100; Connealy Black Granite; Connealy Final Solution; SAV International 2020; SAV Brilliance 8077



**Vision Unanimous 1418**



**KMBroken Bow 002**

**COMPLIMENTARY LUNCH STARTING AT 10:30 a.m.**

Watch & Bid Live online at: **www.DVAuction.com**



FOR MORE INFORMATION, OR TO REQUEST A SALE BOOK CONTACT:  
**IAN JAMES: 308.470.0247 OR 308.775.3028**

**WWW.JAMESANGUSRANCH.COM**

(Continued on page 126)

**Performance Report** (continued from page 125)

The bulls will be weighed off test with an average of weights collected Feb. 13 and 14. The test sale will be at the farm March 25.

For more information contact Scott Greiner, extension beef specialist, 366 Litton-Reaves Hall, Virginia Tech, Blacksburg, VA 24061; phone: 540-231-

9159; fax: 540-231-3010; Joi Saville, extension associate, phone: 540-231-2257; Tim Sutphin, owner/manager, Hillwinds Farm, 5660 Thornspring Church Rd., Dublin, VA 24084; 540-980-5848; or visit the test website at <http://bcia.apsc.vt.edu>.

**Michigan Bull Test  
56-day report (Dec. 22, 2017)**

The Michigan Cattlemen's Association (MCA) and Michigan State University (MSU) announced the beginning of the MCA/MSU Bull Evaluation Program, with 79 bulls weighing an average of 821 lb. Consignors must be paid members of the

MCA and have their 2017 dues paid in advance. To be eligible for the test, bulls must have been born Sept. 1, 2016-March 31, 2017. There are 35 junior Angus bulls and 14 senior Angus bulls on test.

All bulls will be evaluated at the MCA/MSU Bull Evaluation Program Station located at Plank Farm, Crystal, Mich. The deadline for entries for the 112-day test was Sept. 1, with a delivery date of Oct. 13-14.

**HIGH-ADG (TIE) SENIOR ANGUS** Lot 11; owner: Rietberg Farms, Hudsonville; sire: VAR Index 3282; ADG: 5.13 lb.; ADG ratio: 109; WDA: 2.88 lb.; WDA ratio: 91; wt.: 975 lb.

**HIGH-ADG (TIE) SENIOR ANGUS** Lot 41; owner: Apple Hill Angus, Harrisville; sire: Woodside; ADG: 5.13 lb.; ADG ratio: 109; WDA: 2.81 lb.; WDA ratio: 89; wt.: 1,345 lb.

**HIGH-ADG (TIE) SENIOR ANGUS** Lot 44; owner: Bordner Farms LLC, Sturgis; sire: KB-Carcass Merritt A02; ADG: 5.13 lb.; ADG ratio: 109; WDA: 2.76 lb.; WDA ratio: 88; wt.: 1,230 lb.

**HIGH-ADG (TIE) SENIOR ANGUS** Lot 45; owner: Bordner Farms LLC, Sturgis; sire: KB-Carcass Merritt A02; ADG: 5.13 lb.; ADG ratio: 109; WDA: 2.88 lb.; WDA ratio: 92; wt.: 1,230 lb.

**HIGH-WDA SENIOR ANGUS** Lot 1; owner: Grand River Angus Farm, Grand Rapids; sire: Baldrige Download Z013; ADG: 5.00 lb.; ADG ratio: 106; WDA: 3.88 lb.; WDA ratio: 123; wt.: 1,435 lb.

**HIGH-ADG JUNIOR ANGUS** Lot 13; owner: Michigan State University, East Lansing; sire: PA Fortitude 2500; ADG: 5.09 lb.; ADG ratio: 146; WDA: 3.06 lb.; WDA ratio: 99; wt.: 1,020 lb.

**HIGH-WDA JUNIOR ANGUS** Lot 30; owner: Dawson Farms, Concord; sire: SAV Pedigree 4384; ADG: 3.93 lb.; ADG ratio: 113; WDA: 3.77 lb.; WDA ratio: 121; wt.: 1,240 lb.

**OVERALL AVERAGES** (79 head)  
ADG: 3.74 lb.; WDA: 3.12 lb.; wt.: 1,027 lb.

**84-day report (Jan. 19)**

**HIGH-ADG SENIOR ANGUS** Lot 11; owner: Rietberg Farms, Hudsonville; sire: VAR Index 3282; ADG: 4.91 lb.; ADG ratio: 110; WDA: 3.00 lb.; WDA ratio: 93; wt.: 1,100 lb.

**HIGH-WDA SENIOR ANGUS** Lot 1; owner: Grand River Angus Farm, Grand Rapids; sire: Baldrige Download Z013; ADG: 4.58 lb.; ADG ratio: 102; WDA: 3.87 lb.; WDA ratio: 121; wt.: 1,540 lb.

**HIGH-ADG JUNIOR ANGUS** Lot 22; owner: KB Angus, Merritt; sire: Deer Valley All In; ADG: 4.82 lb.; ADG ratio: 138; WDA: 3.32 lb.; WDA ratio: 106; wt.: 1,140 lb.

**HIGH-WDA JUNIOR ANGUS** Lot 30; owner: Dawson Farms, Concord; sire: SAV Pedigree 4384; ADG: 3.81 lb.; ADG ratio: 109; WDA: 3.75 lb.; WDA ratio: 120; wt.: 1,340 lb.

**OVERALL JUNIOR AVERAGES** ADG: 3.51 lb.; WDA: 3.14 lb.

25th Annual

# W BULL TEST SALE

**C  
A**

sponsored by  
Washington Cattlemen's Association

**NEW  
SALE DATE**

**March 21, 2018  
12:00pm**

Bonina Feed & Sale Facility  
Eltopia, WA

**119 BULLS**

**28 Hereford**

**15 Polled**

**13 Horned**

**74 Angus**

**6 Angus Composites**

**3 Red Angus**

**8 Simmental**

**Semen Tested & Quality Evaluated!**

**120 - Day Bull Test - Fed for Moderate Gain**

**Ages Range from January 1, 2017-March 31, 2017**

**Bulls are presently on test and can be viewed at the Bonina Ranch in Eltopia, WA**

**SALE CRITERIA**

1. All bulls must pass semen and quality test
2. Bulls must index 85 or greater for gain and yearling weight
3. Bulls must ratio in top 75% of each breed
4. Low birth EPD for Angus (2.0 BW EPD or less, CED 8 or greater, actual BW 80 or less and BW EPD of 2.0 from both dam and sire)
5. All bulls will have individual ultrasound carcass data results
6. All bulls tested negative for BVD
7. Angus and Angus composites identified as potential carriers of genetic defects will be identified in the sale listing.
8. Calving ease Hereford bulls must have an actual birth weight of 80 lbs. or less, a birth EPD of 2.0 or less and a CED of 2.0 or greater and both the sire and dam must have a birth EPD of 3.5 or less based on the updated EPD information at the conclusion of the test, to qualify for the low birth EPD division.

**COME EARLY!**

**March 20th Events Include: Viewing Sale Bulls,  
6:30 p.m. Social**

**March 21st: Attend the Pre-Sale Trade Show and  
Complimentary Lunch**

Progress reports & sale books may be viewed at  
<http://www.washingtoncattlemen.org/bull-test-sale/>  
or by contacting the Sale Management Team

*Please feel free to visit the Bull Test and preview the bulls at the Bonina facility from now until the sale.*

Auctioneer - Butch Booker - Colfax, WA  
Sale Management Team  
Field Marketing, LLC  
Jack Field (509) 929-1711  
[jackfield@kvalley.com](mailto:jackfield@kvalley.com)  
PO Box 9494, Yakima, WA 98909  
&  
Wesselman Livestock  
Rod Wesselman (509) 750-2185  
[rwesselman81@gmail.com](mailto:rwesselman81@gmail.com)

**OVERALL SENIOR AVERAGES** ADG: 4.48 lb.; WDA: 3.21 lb.

**OVERALL AVERAGES (79 HEAD)** ADG: 3.70 lb.; WDA: 3.16 lb.; wt.: 1,129 lb.

Final weights are to be taken Feb. 15-16. The sale is scheduled for March 18.

For more information contact Dan Buskirk, extension beef specialist; buskirk@msu.edu; 2265 Anthony Hall, Michigan State University, East Lansing, MI 48824; 517-432-0400; Brian Plank, manager, brianplank@rocketmail.com; 325 Mount Hope Rd., Crystal, MI 48818; phone: 989-235-6253 (office) or 989-506-2061 (cell); Michigan Cattlemen's Association, micattlemen@aol.com; 2145 University Park Dr., Ste. 300, Okemos, MI 48864; phone: 517-347-8117. Additional information can be found on the test website at <http://beef.msu.edu/bulleval>.

**Manitoba Bull Test**  
**56-day report (Dec. 27, 2017)**

The Manitoba Beef Cattle Performance Association Bull & Heifer Development Test took delivery Oct. 2-5 of 125 bulls, 67 of them Angus\*, for the 2017-2018 test at its Douglas Bull Test Station in Carberry, Man., Canada. Consignors must be members of the Manitoba Beef Cattle Association, and bulls must have been born Jan. 1-April 30, 2017, to be eligible for the 112-day test.

**HIGH-ADG ANGUS** Lot 66; owner: Squirrel Creek Angus, Chris Moore, MacGregor, Man.; sire: Vision Unanimous 1418; ADG: 5.73 lb.; WDA: 3.26 lb.; wt.: 1,139 lb.

**HIGH-WDA ANGUS** Lot 21; owner: Black Creek Cattle Co., Carroll, Man.; sire: KBJ Body Builder 248B; ADG: 5.30 lb.; WDA: 3.96 lb.; wt.: 1,256 lb.

**ANGUS AVERAGES** (67 head) ADG: 3.96 lb.; WDA: 3.30 lb.; wt.: 1,044 lb.

**OVERALL AVERAGES** (125 head) ADG: 3.91 lb.; WDA: 3.23 lb.

**84-day report (Jan. 24)**

**HIGH-ADG ANGUS (TIE)** Lot 66; owner: Squirrel Creek Angus, Chris Moore, MacGregor, Man.; sire: Vision Unanimous 1418; ADG: 4.54 lb.; WDA: 3.19 lb.; wt.: 1,199 lb.

**HIGH-ADG ANGUS (TIE)** Lot 45; owner: Blue Gentain, Norman Bednar, Vita, Man.; sire: Blue Gentian Objective 9516A; ADG: 4.54 lb.; WDA: 3.69 lb.; wt.: 1,175 lb.

**HIGH-WDA ANGUS** Lot 21; owner: Black Creek Cattle Co., Carroll, Man.; sire: Peak Dot Bold 469B; ADG: 4.46 lb.; WDA: 3.88 lb.; wt.: 1,334 lb.

**ANGUS AVERAGES** (67 head) ADG: 3.40 lb.; WDA: 3.23 lb.; wt.: 1,108 lb.

**OVERALL AVERAGES** (125 head) ADG: 3.42 lb.; WDA: 3.18 lb.

Bulls are scheduled to be weighed off test Feb. 19-20. The sale is to take place March 31, 2018.

For more information contact Ivan

(Continued on page 128)

**Calhoun Bull Evaluation Performance Test & Sale,**  
**Dec. 1, 2017, Calhoun, Ga.**

Alan Bridges and Phillip Bridges, Bridges Angus Farm LLC, Lexington, Ga., consigned the high-indexing Angus bull. Bridges Weigh Up 6102 is a September 2016 son of Plattemere Weigh Up K360. He posted an average daily gain of 4.98 lb., with an adjusted yearling weight of 1,408 lb. Pictured are (from left) Alan Bridges and Phillip Bridges, consignors; and Lee Brown, Georgia Cattlemen's Ass'n president.



PHOTO COURTESY AMERICAN ANGUS ASSOCIATION

# Stone Gate Farms

## Annual Production Sale

**12:30 p.m. • Monday • March 5, 2018**

**At the farm 1669 Mill Creek Rd • Flemingsburg, KY**

**Selling 123 LOTS: 60 BULLS - 30 Fall Yearlings • 30 Spring Yearlings**

**10 COWS** (Most with fall calves at side) • **15 BRED HEIFERS** (Due to start calving by sale day)

**18 BRED HEIFERS** (Due to calve in the fall of 2018) • **20 OPEN HEIFERS**



BW -4.0  
WW +42  
YW +78  
MILK +30

**Stone Gate Comrade 6907**  
Reg. No. 18845940 • DOB: 01/17/2017



BW +3  
WW +39  
YW +80  
MILK +22

**Stone Gate Jipsy 46**  
Reg. No. 18655283 • DOB: 09/02/2016



BW +1.0  
WW +55  
YW +104  
MILK +26

**Stone Gate Thunder 7357**  
Reg. No. 18847571 • DOB: 02/20/2017



BW +2.2  
WW +63  
YW +114  
MILK +26

**Stone Gate Windbreak 516**  
Reg. No. 18655289 • DOB: 09/09/2016

*We encourage you to consign your feeder calves sired by Stone Gate bulls to a special Feeder Calf Sale at Bluegrass Maysville Stock Yards in November 2018. Take advantage of higher prices by selling in load lots or larger groups at this special sale. Contact us for more information.*

Auctioneer:

**Eddie Burks • Cell 270-991-6398**

For More Information or Sale Book:



## Stone Gate Farms

1669 Mill Creek Rd • Flemingsburg, KY  
Charles Cannon • Home 606-849-4278 • Cell 606-748-0747  
Jere Cannon • Home 606-849-4360 • Cell 606-748-6306  
Chris Cannon • Cell 606-748-0407  
Victoria Cannon Cell 606-748-5420  
email: stonegateangus@gmail.com • Fax 606-845-1680

For 65 years we have been breeding for traits of greatest economic importance to the commercial industry. Uniformity not rarity has been a trademark of our cattle. Plan to be with us on sale day or visit anytime.

View our sale on



View Our Sale Book at [StoneGateFarms.com](http://StoneGateFarms.com) or [angus.media](http://angus.media)



**Performance Report** (continued from page 127)

Ahntholz, station manager, office phone: 204-763-4696; cell: 204-724-6271; or Bev Walker, office manager, office phone: 204-763-4696; fax: 204-763-4102; bulltest@mynetset.ca; or visit the test website at [www.manitobabulltest.com](http://www.manitobabulltest.com).

**\*Editor's Note:** Both red and black Angus are tested as Angus in Canada.

**SIU Bull Test  
56-day report (Nov. 28, 2017)**

Southern Illinois University (SIU) in Carbondale accepted 57 bulls for testing Oct. 12-13, 2017. There are 37 junior bulls and 20 senior bulls on test on the 84-day test. Applications were due Sept. 8. The test began Oct. 30-31, 2017, with

final weights scheduled for Jan. 22-23, 2018.

The bull test station team is student-run, with Rebecca Atkinson, associate professor of animal science, food and nutrition for beef cattle providing advisory oversight and hands-on training. The objective is to test the bulls'

potential for producing superior calves that will grow fast and efficiently.

To be eligible for the program, bulls must be registered with a recognized national breed association, come to the facility in good health and meet other criteria set by Atkinson and the bull test station advisory board.

**HIGH-ADG JUNIOR ANGUS** Lot 32; owner: Eagle River Angus, Princeville, Ill.; sire: AAR Ten X 7008 SA; ADG: 6.82 lb.; ADG ratio: 127; F/G: 4.29 lb.; F/G ratio: 118; wt.: 1,230 lb.

**BEST F/G JUNIOR ANGUS** Lot 25; owner: Betzold Farms, Nokomis, Ill.; sire: VAR Generation 2100; ADG: 5.84 lb.; ADG ratio: 108; F/G: 4.07 lb.; F/G ratio: 124; wt.: 1,275 lb.

**HIGH-ADG SENIOR ANGUS** Lot 54; owner: Gajewski Farms, Ashley, Ill.; sire: AAR Ten X 7008 SA; ADG: 6.52 lb.; ADG ratio: 119; F/G: 5.55 lb.; F/G ratio: 108; wt.: 1,410 lb.

**BEST F/G SENIOR ANGUS** Lot 53; owner: Gajewski Farms, Ashley; sire: AAR Ten X 7008 SA; ADG: 6.02 lb.; ADG ratio: 109; F/G: 5.15 lb.; F/G ratio: 117; wt.: 1,435 lb.

**JUNIOR ANGUS AVERAGES** (67 head) ADG: 5.39 lb.; WDA: 5.07 lb.; wt.: 1,129 lb.

**SENIOR ANGUS AVERAGES** (67 head) ADG: 5.50 lb.; WDA: 6.02 lb.; wt.: 1,349 lb.

The sale is set for March 2, 2018, and will include an online video option. For more information contact Atkinson at SIU-Carbondale; Department of Animal Science, Food & Nutrition; Mail Code 4417; 1205 Lincoln Dr.; Carbondale, IL 62901; phone: 618-453-5000; fax: 618-453-5231; or [ratkinsn@siu.edu](mailto:ratkinsn@siu.edu). Information is also available on the test website at <http://bulltest.siuc.edu/>.

**WIU Bull Test  
56-day report (Dec. 13, 2017)**

The 45th Western Illinois University (WIU) Bull Test, Macomb, Ill., received 72 bulls, representing the Angus, Simmental, Red Angus, Hereford, SimAngus and Charolais breeds, according to Keela Trennepohl, WIU School of Agriculture bull test station supervisor. The bulls officially began the test Oct. 19, 2017.

**HIGH-ADG ANGUS** Lot 404; owner: Can Am Cattle Co., Shelbyville, Ill.; sire: JMB Traction 292; ADG: 5.75 lb.; ADG ratio: 134; WDA: 3.63 lb.; wt.: 1,168 lb.

**HIGH-WDA ANGUS** Lot 303; owner: Kevin Washburn, Olney, Ill.; sire: Whitestone Widespread MB; ADG: 4.60 lb.; ADG ratio: 107; WDA: 4.02 lb.; wt.: 1,150 lb.

**84-day report (Jan. 10, 2017)**

**HIGH-ADG ANGUS** Lot 306; owner: Eagle River Angus, Dunlap, Ill.; sire: VAR Discovery 2240; ADG: 5.28 lb.; ADG ratio: 121; WDA: 3.52 lb.; wt.: 1,298 lb.

**HIGH-WDA ANGUS** Lot 303; owner: Kevin Washburn, Olney, Ill.; sire:

# ROBERTS Angus

Stacey & Darlene Roberts, 701.898.4333 or 701.743.4333  
Luke & Lindsey Baker, 701.477.4522  
sdrobertsangus@gmail.com • www.robertsangus.com  
2184 68th Ave. NW, Raub, ND 58779

**Tuesday, March 20th**

1:00 p.m.  
at Kist Livestock Auction, Mandan, N.D.

*Herd sires used ... Jindra Acclaim, Basin Payweight 1682, Musgrave Big Sky, SAV Resource, SAV McCombie, SAV Burbank, Sitz Final Product, Prairie Pride Next Step 2036, SAV Platinum and Young Dale Believe 46B.*



**|| S D R Next Step 7005 ||**

Son of Prairie Pride Next Step 2036 || AAA 18984357  
BW 74 lbs. || Act. WW 950 lbs. || 205 Wt. 924 lbs.  
BW +1.6 || WW +72 || YW +133 || MILK +26



**|| S D R Resource 7044 ||**

Son of S A V Resource 1441 || AAA 18984431  
BW 85 lbs. || Act. WW 950 lbs. || 205 Wt. 894 lbs.  
BW +4.5 || WW +67 || YW +122 || MILK +22



**|| S D R Big Sky 7032 ||**

Son of Musgrave Big Sky || AAA 18984221  
BW 78 lbs. || Act. WW 1,000 lbs. || 205 Wt. 925 lbs.  
BW +2.1 || WW +68 || YW +116 || MILK +26



**|| S D R Platinum 7030 ||**

Son of S A V Platinum 0010 || AAA 18984240  
BW 78 lbs. || Act. WW 960 lbs. || 205 Wt. 940 lbs.  
BW +2.4 || WW +72 || YW +123 || MILK +24



**|| S D R Acclaim 7060 ||**

Son of Jindra Acclaim || AAA 18984377  
BW 66 lbs. || Act. WW 920 lbs. || 205 Wt. 847 lbs.  
BW -1.0 || WW +65 || YW +122 || MILK +23



**|| S D R McCombie 7025 ||**

Son of S A V McCombie 4824 || AAA 18984229  
BW 74 lbs. || Act. WW 890 lbs. || 205 Wt. 909 lbs.  
BW +0.9 || WW +68 || YW +118 || MILK +29

Whitestone Widespread MB; ADG: 5.10 lb.; ADG ratio: 116; WDA: 4.20 lb.; wt.: 1,320 lb.

The bulls will be weighed every 28 days throughout the test, and the test website will be updated after each weigh date. Off-test weights are scheduled to be taken Feb. 7 and 8, 2018. The test sale is scheduled for March 9, 2018.

The WIU bull test station is open daily for those who want to view the bulls during the test period. For more information about the test and to follow the progress of the bulls, contact Trennepohl at 309-298-1288. The test website is [www.wiu.edu/bulltest](http://www.wiu.edu/bulltest).

**Edisto Forage Bull Test**  
**On-test report (Dec. 19, 2017)**

The 2018 Edisto Forage Bull Test (EFBT), located at the Edisto Research & Education Center near Blackville, S.C., accepted delivery of 60 bulls Dec. 5, 2017. The test began Dec. 19 with all bulls weighing an average of 780 lb. Senior bulls eligible for the test were born Nov. 1, 2016-Jan. 31, 2017. Junior bulls eligible for the test were born Feb. 1-March 31, 2017.

The test is a 168-day pasture-based test. EFBT was developed, built and started in 1982 with the commercial cow-calf producer in mind and capitalizing on the Southeast's advantage in its ability to grow high-quality, lush forages year-round. EFBT was designed to performance-test bulls in an environment in which bull buyers expect their progeny to perform.

Interim weigh dates have been scheduled for Jan. 16, Feb. 13, March 13, April 10 and May 8.

The bulls will be weighed off test June 5. The sale is scheduled for Oct. 14, 2018.

For more information contact Scott Sell at 803-284-3343, ext. 223 (office); 803-450-0995 (cell) or [gsell@clemson.edu](mailto:gsell@clemson.edu). Additional information is available on the test website at [www.clemson.edu/extension/bulltest/index.html](http://www.clemson.edu/extension/bulltest/index.html).

**Kansas Angus Ass'n Bull Test**  
**Mid-test report (Dec. 28, 2017)**

There were 68 Angus bulls delivered to Kansas Bull Development LLC, Wamego, Oct. 13-14 for the Kansas Angus Association Bull Test. Nominations were due Oct. 2, 2017. The test will be conducted and managed at Kansas Bull Development LLC by Brian and Megan Hagedorn.

To be eligible for the 112-day test, bulls must have been born Jan. 1-April 15, 2017.

**HIGH-ADG AND HIGH-INDEXING ANGUS** Lot 222; owner: Barta Farms, Ryan Barta, Little River; sire: VAR Discovery 2240; ADG: 5.32 lb.; ADG ratio: 156; WDA: 3.34 lb.; WDA ratio: 115; wt.: 1,100 lb.; test index: 136  
**HIGH-WDA ANGUS** Lot 242; owner: VanDerVeen Farms, Curtis VanDerVeen,

Prairie View; sire: Tehama Tahoe B767; ADG: 3.40 lb.; ADG ratio: 99; WDA: 3.53 lb.; WDA ratio: 121; wt.: 1,090 lb.; test index: 111

Final weights were scheduled for Feb. 22, 2018. The test sale will take place March 28 at the Mitchell County Fairgrounds, Beloit, Kan.

Test results will be posted on the test website at [www.kansasbulltest.com](http://www.kansasbulltest.com).

**Tifton Bull Test**  
**84-day report (Jan. 2, 2018)**

The 60th Tifton Bull Evaluation Program at Tifton, Ga., began Oct. 9-10 with the delivery of 146 bulls representing eight

different breeds and averaging 843 lb. The 112-day test features bulls born Dec. 1, 2016-Feb. 28, 2017. All bulls tested negative for persistent infection with bovine viral diarrhea (PI-BVD).

Going on test Oct. 10, the 76 Angus bulls averaged 855 lb. for a WDA of 3.14

*(Continued on page 130)*

# Gleonda-Garton LEGACY

*of Performance*  
**Sale**

**March 11, 2018**  
**1:30 PM**

**Springfield Livestock Marketing Center**  
**Springfield, MO**

To request a sale book, visit us online  
[www.gleondaangus.com](http://www.gleondaangus.com)



**Reg: 18089605** DOB: 01/21/2015  
Sire: Gleonda In Focus X003  
Due to calve Jan '18 to Thomas Up River



**Reg: 17967000** DOB: 01/14/2014  
Sire: Gleonda In Focus X003  
Weaning ration of 2 @ 111



**Reg: 18089591** DOB: 01/19/2015  
Sire: Gleonda New Design  
Due to calve Jan '18 to WAR Alliance 9126



**Reg: 18768187** DOB: 01/01/2017  
Sire: K C F Bennett Absolute  
+14 CED, -1.4 BW, +69 WW, +132 YW



**Reg: 18766734** DOB: 01/20/2017  
Sire: WRR Program 254  
+61 WW, +111 YW, +166.46 \$B, 802 Adj. WW



**Reg: 18766738** DOB: 01/28/2017  
Sire: WRR Program 254  
+74 WW, +129 YW, +.86 RE,  
+178.11 \$B, 840 Adj. WW

**Over 100 Bulls  
and Females Sell!**

Sale broadcasted on  
**PVAuction**  
Broadcasting Real-Time Auctions



Leon Kleeman Family  
Miller, MO  
417-536-8080 Traves Cell  
[gleondafarms@hotmail.com](mailto:gleondafarms@hotmail.com)

**Garton Angus  
Ranch**

Norman and Vicki Garton & Family  
Nevada, Missouri  
417-667-5696 home - 417-684-5477 cell  
[ngar2@yahoo.com](mailto:ngar2@yahoo.com)

**Performance Report** (continued from page 129)

lb., while all 146 bulls averaged 843 lb. with a WDA of 3.06 lb. Final weights were scheduled for collection Jan. 29-30, 2018.

**HIGH-ADG ANGUS** Lot 78; owner: Gillis Angus Farm, Eastman, Ga.; sire: Connealy Consensus 7229; ADG: 5.68 lb.; ADG ratio: 134; WDA: 3.79 lb.; WDA

ratio: 112; wt.: 1,410 lb.

**HIGH-WDA ANGUS** Lot 146; owner: Acres Away Angus, Hampton, Ga.; sire: Herbster Prescription 5128; ADG: 4.89 lb.; ADG ratio: 116; WDA: 3.88 lb.; WDA ratio: 114; wt.: 1,275 lb.

**ANGUS AVERAGES** (72 head) ADG: 4.23 lb.; WDA: 3.39 lb.; wt.: 1,211 lb.

**OVERALL AVERAGES** (140 head) ADG: 4.15 lb.; WDA: 3.34 lb.; wt.: 1,197 lb.

Qualifying bulls will sell March 7, 2018. Visitors are welcome at the station 8 a.m. to 5 p.m., Monday through Friday. Contact Jacob Segers for more information at 2360 Rainwater Rd., Tifton, GA 31793; phone: 229-386-3683

or at [jacobs@uga.edu](mailto:jacobs@uga.edu). If weekend visits are desired, please call Mike Keeler at 229-831-5416. Bull and heifer reports can be accessed through the test website at [www.ugabeef.com/programs](http://www.ugabeef.com/programs).

**OPSU Bull Test 56-day report (Dec. 2)**

The 85 beef bulls consigned to the 66th annual Oklahoma Panhandle State University (OPSU) Beef Bull Performance Test in Goodwell, Okla., were weighed on test Oct. 7. Consigned by 17 breeders, breeds represented were Angus, Hereford, Maine-Anjou and Red Angus.

**HIGH-ADG SENIOR ANGUS** owner: B&M Angus, Edmond, Okla.; sire: B&M Upshot 304; ADG: 7.46 lb.

**HIGH-ADG JUNIOR ANGUS** owner: William Gilmore, Canyon, Texas; sire: JAF 545 Tradition; ADG: 6.59 lb.

**ANGUS SENIOR PEN** owner: B&M Angus; avg. ADG: 6.62 lb.

**ANGUS JUNIOR PEN** Owner: B&M Angus; avg. ADG: 4.80 lb.

**84-day report (Dec. 30)**

**HIGH-ADG SENIOR ANGUS** owner: B&M Angus, Edmond, Okla.; sire: B&M Upshot 304; ADG: 7.73 lb.

**HIGH-ADG JUNIOR ANGUS** owner: William Gilmore, Canyon, Texas; sire: JAF 545 Tradition; ADG: 6.21 lb.

**ANGUS SENIOR PEN** owner: B&M Angus; avg. ADG: 6.11 lb.

**ANGUS JUNIOR PEN** owner: B&M Angus; avg. ADG: 4.99 lb.

**OVERALL ADG** (85 head) ADG: 4.58 lb.

The 112-day test was scheduled to conclude Jan. 27, 2018. The sale is scheduled for Feb. 19. For more information about the bulls, contact Gwen Martin at 580-349-1500 or [gwen@opsu.edu](mailto:gwen@opsu.edu).

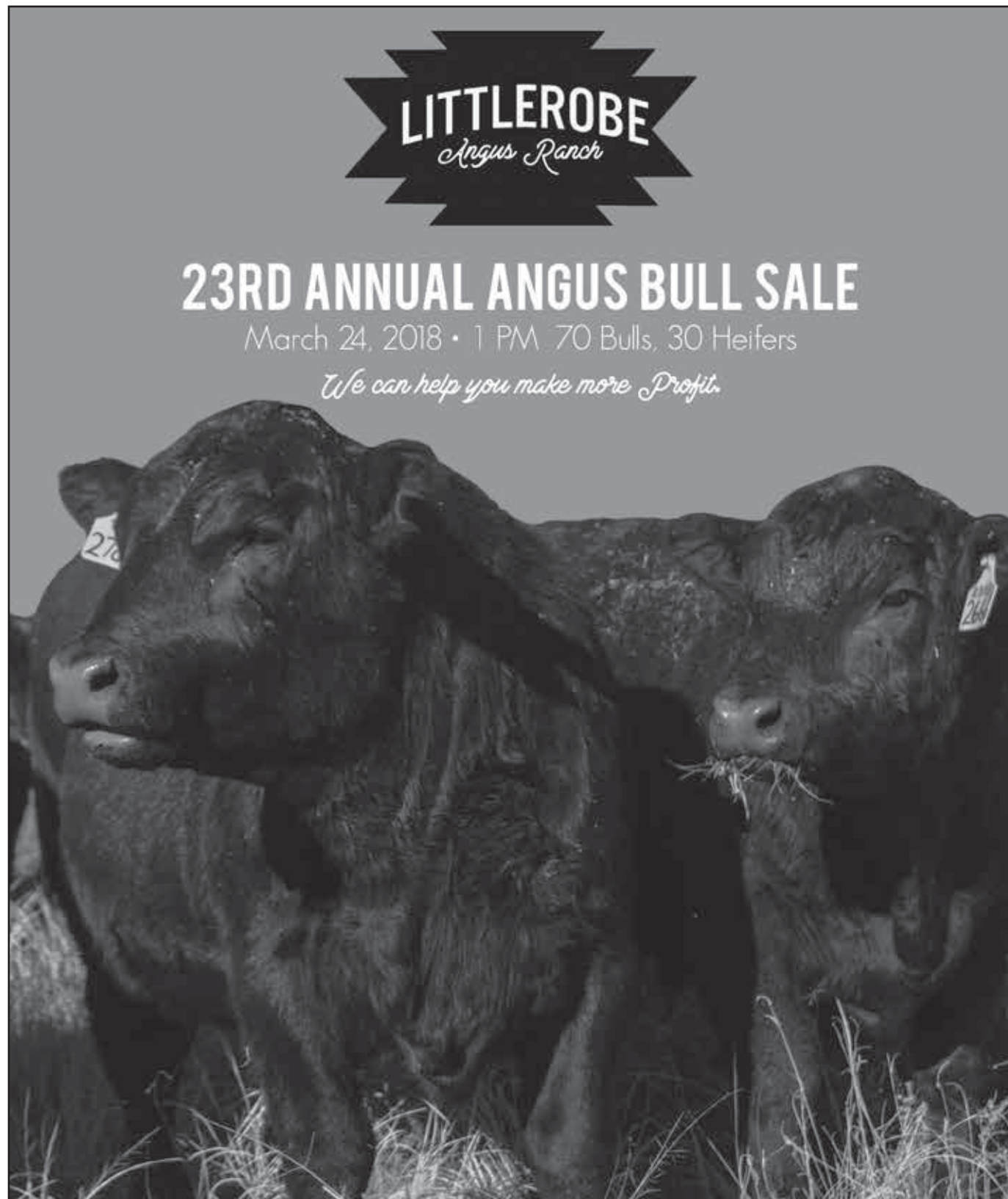
**Pennsylvania Bull Test 56-day report (Dec. 26, 2017)**

The Pennsylvania Department of Agriculture, in cooperation with the Department of Dairy and Animal Science of the Pennsylvania State University, the Pennsylvania Cattlemen's Association and the state breed associations, announced the Oct. 10, 2017, delivery of 188 bulls, 118 of them Angus, for the 2017-2018 Winter Pennsylvania Performance Bull Test conducted at Pennsylvania Furnace, Pa.

To be eligible for the winter test, bulls must be born Jan. 1-April 15, 2017. The nomination period for the winter test was Aug. 1-Aug. 20, 2017, with an on-test date of Oct. 31. At the 56-day mark, test leaders included the following.

**HIGH-ADG ANGUS** Lot 103; owner: Brakel Ridge Cattle Co., Jacob Christy, Cincinnati, N.Y.; sire: HF Tiger 5T; ADG: 5.95 lb.; ADG ratio: 145; WDA: 3.40 lb.; WDA ratio: 105; wt.: 1,215 lb.

**HIGH-WDA ANGUS** Lot 114; owner: JK Cattle Co., Jim and Jolene Kuhn,



**23RD ANNUAL ANGUS BULL SALE**

March 24, 2018 • 1 PM 70 Bulls, 30 Heifers

*We can help you make more Profit.*

Duane Jenkins  
11790 CR 30  
Higgins, TX 79046  
806.852.4171

**LITTLEROBE**  
*Angus Ranch*  
Family owned & operated since 1965

Dale Jenkins  
11788 CR 30  
Higgins, TX 79046  
806.852.2485

Visit [www.littlerobeangusranch.com](http://www.littlerobeangusranch.com) to view our sale online.



Conneautville; sire: AAR Ten X 7008; ADG: 5.31 lb.; ADG ratio: 130; WDA: 4.09 lb.; WDA ratio: 127; wt.: 1,244 lb.

**ANGUS AVERAGES** (118 head) ADG: 4.09 lb.; WDA: 3.23 lb.; wt.: 981 lb.

The final 112-day weights are to be taken Feb. 20, with the sale to take place March 30.

Questions should be addressed to Greg Hubbard, station manager, 1494 West Pine Grove Rd., Pennsylvania Furnace, PA 16865; phone: 814-238-2527; or ghubbard@pa.gov. For more information visit the test website at [www.livestockevaluationcenter.com/BullTesting.aspx](http://www.livestockevaluationcenter.com/BullTesting.aspx).

**◉ Tucumcari Bull Test 60-day report (Dec. 26, 2017)**

New Mexico State University's Agricultural Science Center at Tucumcari is benefiting from a public/private partnership to evaluate beef cattle feed efficiency genetics. Since 1961, the New Mexico Beef Cattle Performance Association (now the Tucumcari Feed Efficiency Test LLC) has tested bulls to estimate feedlot performance of their progeny based on pen feed efficiency as the average of up to four animals. In 2015, facilities were upgraded with GrowSafe® technology, allowing

measurement of individual animal feed efficiency with planned expansions to allow concurrent testing of 160 head.

The concept behind genetic testing for feed efficiency is herd improvement at the farm/ranch level, which should translate into either higher feeder-cattle prices or reduced feed costs at the feedlot level. Improved beef cattle feed efficiency also will help increase global food production, particularly protein, without having to increase crop production acreage or yield per acre.

There are now separate contemporary groups vs. one complete test group as in years past. Bulls in the large pens are the bulls tested for feed-to-gain efficiency (F/G). Group A includes older bulls that were placed in the feed-efficiency testing pen to measure intake for the first 60 days of the test. Group B consists of the younger calves scheduled to be evaluated for efficiency during the last 60 days of the overall test. Group C is considered the individually tested bulls.

**HIGH-ADG GROUP A ANGUS** Lot 11-3; owner: Salazar Ranches, Espanola, N.M.; sire: WMR Infinity 141; ADG: 6.17 lb.; ADG ratio: 158; RFI: -1.36; wt.: 1,120 lb.

**HIGH-WDA GROUP A ANGUS** Lot

*(Continued on page 132)*

**Performance Report Index**

◉ Calhoun Bull Test 112-day final report	120
◉ Calhoun Bull Test & Sale	127
◉ Clemson Bull Test 112-day final report	121
◉ Edisto Forage Bull Test on-test report	129
◉ Green Springs Spring Bull Test 112-day final report	120
◉ Hinds Community College Bull Test on-test report	122
◉ IBEP Winter Test 63-day report	123
◉ ICA Bull Evaluation interim report	133
◉ Kansas Angus Ass'n Bull Test mid-test report	129
◉ Manitoba Bull Test 56-day report	127
◉ Manitoba Bull Test 84-day report	127
◉ MBCIA Bull Test 56-day report	122
◉ Michigan Bull Test 56-day report	126
◉ Michigan Bull Test 84-day report	126
◉ Midland Bull Test Group 1 intermediate report	132
◉ Midland Bull Test Group 2 intermediate report	133
◉ Nebraska Bull Test 60-day report	123
◉ Nebraska Bull Test 90-day report	124
◉ OPSU Bull Test 56-day report	130
◉ OPSU Bull Test 84-day report	130
◉ Pennsylvania Bull Test 56-day report	130
◉ SIU Bull Test 56-day report	128
◉ Southwest Virginia Bull Test 56-day report	125
◉ Southwest Virginia Bull Test 84-day report	125
◉ Tifton Bull Evaluation Program 84-day report	129
◉ Tucumcari Bull Test 60-day report	131
◉ UBIA Bull Test mid-test report	124
◉ UBIA Bull Test 84-day report	124
◉ Un. of Tennessee Sr. Bull Test 84-day final report	121
◉ Virginia BCIA Culpeper Sr. Bull Test 112-day final report	120
◉ Wardensville Bull Test 29-day report	132
◉ WCA All-Breed Bull Test 60-day report	122
◉ WIU Bull Test 56-day report	128
◉ WIU Bull Test 84-day report	128



This is the most powerful offering in our two decades of serving as a trusted Angus seedstock supplier. We encourage you to take a look at our "preview" of the 16<sup>th</sup> Annual Production Sale!

**16<sup>th</sup> Annual PRODUCTION SALE**  
**Monday, March 19, 2018**

*At the farm ■ Nevada, Missouri ■ 11 AM (NEW sale time)*

**SELLING APPROXIMATELY 300 HEAD**

**140 Bulls ■ 160 Females**  
*(including 30 two-year-old spring pairs)*

**HPCA Check It (18759682)**

When we talk about breeding cattle that can check all the boxes rather than chase an extreme, this direct son of 9022 is a perfect specimen. He does it without sacrificing fleshing ability, structure and muscle. Look him up and find a better young herd sire prospect!



**HPCA Patron R56 (18842143)**

HPCA Patron R56 is a full brother to the great HPCA Sunrise 9022. He is as powerful as Sunrise as you will find. A true "stock" bull!



**HPCA Straightforward (18835117)**

HPCA Straightforward is a genomic and phenotype standout and another bull that can check all the boxes. Sired by 100X out of one of our best Prophet daughters, A696 is a true herd sire prospect.



**LiveAuctions.TV**  
Watch the sale and bid live online.

**f**  
FB.com/  
HinklesPrimeCutAngus

**YouTube**  
YouTube.com/  
HinklesPrimeCutAngus

Kenny & Janyce Hinkle ■ 14103 E. Summers Rd. ■ Nevada, MO 64772  
Phone/Fax: (417) 944-2219 ■ Kenny's Mobile: (417) 448-4127 ■ KennyHPCA@gmail.com  
Trevor Hinkle: (417) 684-1122 ■ Blake Baker: (417) 448-4384

**www.HinklesPrimeCutAngus.com**

**Performance Report** (continued from page 131)

18-2; owner: Sanchez Angus, Belen, N.M.; sire: PS Emblazon 1478; WDA: 3.47 lb.; WDA ratio: 128; RFI: 1.44; wt.: 1,150 lb.

Best RFI group A Angus Lot 6-6; owner: Riverside Angus, Alex and JoEllen Netherton, Las Animas, Colo.; sire: Sitz Onward 3775; ADG: 4.87 lb.; ADG ratio:

125; RFI: -6.00; wt.: 1,173 lb.

**HIGH-ADG GROUP B ANGUS** Lot 14-2; owner: Cody Drager, Las Animas, Colo.; sire: OCC Unmistakable 946U; ADG: 5.11 lb.; ADG ratio: 131; wt.: 1,008 lb.

**HIGH-WDA GROUP B ANGUS** Lot 4-6; owner: McCall Land & Cattle, Albuquerque, N.M.; sire: RAB JR Absolute

3211Z; WDA: 3.19 lb.; WDA ratio: 118; wt.: 942 lb.

**HIGH-ADG GROUP C ANGUS** Lot 18-10; owner: Sanchez Angus; sire: WMR Infinity 141; ADG: 6.17 lb.; ADG ratio: 158; wt.: 1,120 lb.

**BEST RFI GROUP C ANGUS** Lot: 18-12; owner: Sanchez Angus; sire:

Bartels Consent T426 574; ADG: 4.85 lb.; RFI: 3.51; wt.: 736 lb.

**ANGUS AVERAGES** (126 head) ADG: 3.89 lb.; WDA: 2.73 lb.; wt.: 924 lb.

**OVERALL AVERAGES** (158 head) ADG: 3.92 lb.; WDA: 2.64 lb.; wt.: 803 lb.

The test sale is scheduled for March 10.

For more information contact Marcy Ward, extension livestock specialist, New Mexico State University, Las Cruces, NM 88003; office phone: 575-646-5947 or cell: 575-644-3379; or visit the test website at <http://tucbulltest.nmsu.edu>.

**Wardensville Bull Test 29-day report (Dec. 20, 2017)**

The West Virginia Young Sire Evaluation Program sponsored by the West Virginia University (WVU) Cooperative Extension, the WVU Division of Animal and Nutritional Sciences, the West Virginia Department of Agriculture and the West Virginia Cattlemen's Association received delivery of bulls Oct. 26, 2016, for the Wardensville Bull Test at the WVU Reymann Memorial Farm in Wardensville.

A maximum of 160 bulls were to be accepted for evaluation. To be eligible, bulls must have been born Jan. 20-March 26, 2017. The enrollment deadline was Sept. 15, 2017. The next interim weight was scheduled for Jan. 17, 2018.

The bulls are being fed a ration ( $NE_m=0.68$ ,  $NE_g=0.41$ ) that includes 20% ground mixed hay, 24% wheat midds, 23% soybean hulls, 8% distillers' grains, 4% cottonseed hulls, 4% corn, 10% hominy feed, and 7% miscellaneous ingredients.

**HIGH-ADG ANGUS** Lot 112; owner: Kinsey's Oak Front Farm, Flemington; sire: The West Virginian X134; ADG: 5.38 lb.; ADG ratio: 158; WDA: 3.28 lb.; wt.: 988 lb.

**HIGH-WDA ANGUS** Lot 229; owner: Pritt Angus Farm, Beverly; sire: Sitz Wisdom 481T; ADG: 5.14 lb.; ADG ratio: 151; WDA: 3.57 lb.; wt.: 1,141 lb.

**ANGUS AVERAGES** (136 head) ADG: 3.40 lb.; WDA: 3.00 lb.; wt.: 929 lb.

The test sale is scheduled for March 22 at the WVU Reymann Memorial Farm at Wardensville.

Test information is available from Kevin Shaffer, program coordinator, WVU Extension Service, 2084 Agricultural Sciences Bldg., PO Box 6108, Morgantown, WV 26505; phone: 304-293-2669; [Kevin.Shaffer@mail.wvu.edu](mailto:Kevin.Shaffer@mail.wvu.edu); or Jerry Yates, WVU Reymann Memorial Farm, phone: 304-874-3561; or on the test website, [www.wvbeef.org/bulltest/](http://www.wvbeef.org/bulltest/).

**Midland Bull Test Group 1 second mid-test report (Jan. 9)**

**Group 2 first mid-test report (Jan. 8)**  
The Midland Bull test in Columbus,



**SALE DATE**  
**March 28, 2018**

at the ranch • 1 mile west of Rolette

*Selling yearling bulls and heifers that represent the type of cattle we strived to breed for 54 years.*

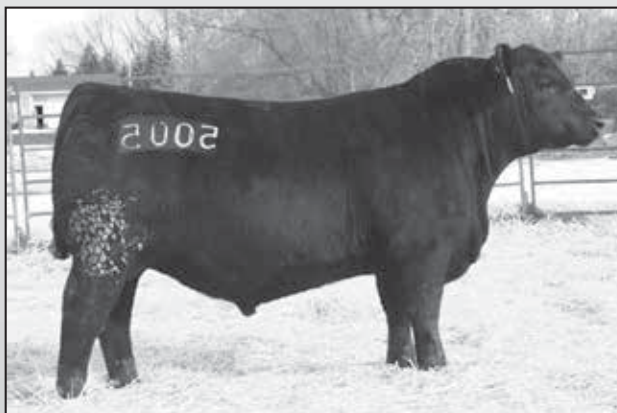
**Mc Cumber Titanium 3127 # 17572789**

An outstanding breeding bull. Titanium sires as much length, muscle and performance in a moderate package as we have seen. His daughters are doing an outstanding job raising their first calves.



**Mc Cumber Steadfast 635 # 18532396**

The high selling bull in our 2017 sale. Thank you to Fredeickson Ranch, SD, Koupal Angus Ranch, SD and ST Genetics. An outstanding bull, sired by Titanium and backed by generations of outstanding, prepotent females. 635 has the potential to be an exceptional herd bull that will see heavy use at Mc Cumber for years to come.



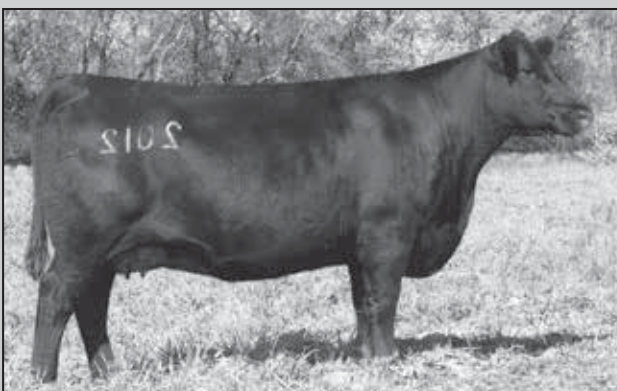
**Mc Cumber Titanium 5005 #18233036**

Sired by Mc Cumber Titanium 3127. Owned with JR Angus and Magic Valley Angus in WA. 5005 has sired two of our most outstanding Herd Bull prospects in 2017.



**Lassie 935 of Mc Cumber # 16464987**

A powerful herd bull producing daughter of Sinclair Extra 4X13. 935 is the dam of the outstanding flush sired by Mc Cumber Tremendous 2008. 2008 is a flush brother to Miss Wix 2012 of Mc Cumber and her outstanding flush sisters.



**Miss Wix 2012 of Mc Cumber # 17338588**

2012 is one of the three outstanding flush sisters sired by OCC Tremendous 619T and out of Miss Wix 2022 of Mc Cumber. 2012 is raising one of the most powerful Herd Bull prospects by Mc Cumber Titanium 3127

**Mc Cumber Angus Ranch**  
8675 37th Ave, Rolette, ND 58366

Chuck: 701/246-3366 or 701/871-9800  
Matt: 701/246-3847 or 701/871-1072

email: [mccumber@utma.com](mailto:mccumber@utma.com)  
[www.mccumberangus.com](http://www.mccumberangus.com)

Mont., is a 120-day gain test with a 70-day efficiency test. Bulls are fed a 44-Mcal diet that is high in roughage for targeted gains of about 3 lb. per day.

Group 1 bulls were received Sept. 13-23, 2017. Group 2 bulls were received Oct. 14-23, 2017. Bulls qualifying for the test must be born Dec. 15, 2016-April 15, 2017.

**HIGH-ADG GROUP 1 ANGUS** Lot 7; owner: Flying AJ Ranch, Stevensville, Mont.; sire: 44 Ten-Gallon Z418; ADG: 4.78 lb.; WDA: 3.28 lb.; wt.: 1,145 lb.

**HIGH-WDA GROUP 1 ANGUS** Lot 282; owner: Olson Cattle Co., Saint Ignatius, Mont.; sire: HA Cowboy Up 5405; ADG: 3.39 lb.; WDA: 4.17 lb.; wt.: 1,180 lb.

**HIGH-ADG (TIE) GROUP 2 ANGUS** Lot 428; owner: Wheeler Mountain Ranch, Whitehall, Mont.; sire: WMR Timeless 081; ADG: 4.49 lb.; WDA: 3.58 lb.; wt.: 1,265 lb.

**HIGH-ADG (TIE) GROUP 2 ANGUS** Lot 468; owner: Double D Angus, Linwood, Neb.; sire: S Chisum 6175; ADG: 4.49 lb.; WDA: 3.40 lb.; wt.: 1,150 lb.

**HIGH-WDA GROUP 2 ANGUS** Lot 630; owner: Fraser Ranch, Paxico, Kan.; sire: McD SF Total Package 1337; ADG: 3.25 lb.; WDA: 3.83 lb.; wt.: 1,125 lb.

Final weights for both groups are to be taken Feb. 2-9. The Angus sale is scheduled for April 6.

For more information contact Steve & Lindsay Williams; 5 Bull Dr., Columbus, MT 59019; phone: 406-322-5597 (office), 406-322-9044; 406-321-7046 (to text Steve) or 406-322-9044 (Lindsay's cell); fax: 406-322-5210; [www.midlandbulltest.com](http://www.midlandbulltest.com).

**ICA Bull Evaluation Program Interim 1 reports (Dec. 29, 2017)**

Bulls were delivered to the Bloomfield and Dunlap test stations for the Iowa Cattlemen's Association (ICA) 2018 Bull Evaluation Program. The Bloomfield test has 35 Angus bulls. The Dunlap test has 11 Angus spring-born bulls. There were 26 Angus bulls delivered for the private group test.

The bulls were to complete a 21-day warm-up period following their respective delivery dates. Bulls were to be weighed twice going on test. The first two weights were to be averaged and mark the start of the 112-day test. The top three-quarters of each breed meeting test requirements will be offered for sale.

**HIGH-ADG DUNLAP ANGUS** Lot 168; owner: Raasch Bros. Performance Cattle, Bridgewater; ADG: 4.47 lb.; ADG ratio: 143; wt.: 1,130 lb.

**HIGH-WDA DUNLAP ANGUS** Lot 159; owner: G.N. Neumeyer, Golden Chute Ranch, Walker; sire: GG Total Impact 388; ADG: 4.25 lb.; ADG ratio: 136; WDA: 4.00 lb.; WDA ratio: 124; wt.: 1,035 lb.

**HIGH-ADG BLOOMFIELD ANGUS** Lot 51; owner: Jaden Deppe, Waverly; sire: AAR Ten X 7008 SA; ADG: 5.76 lb.; ADG

ratio: 160; WDA: 3.72 lb.; WDA ratio: 114; wt.: 1,235 lb.

**HIGH-WDA BLOOMFIELD ANGUS** Lot 63; owner: R&C Angus, Ruhl and Cheryl Barker, Monticello; ADG: 3.53 lb.; ADG ratio: 98; WDA: 3.87 lb.; WDA ratio: 118; wt.: 1,060 lb.

**DUNLAP ANGUS AVERAGES** ADG:

3.14 lb.; WDA: 3.22 lb.; wt.: 981 lb.

**BLOOMFIELD ANGUS AVERAGES**

ADG: 3.60 lb.; WDA: 3.27 lb.; wt.: 1,039 lb.

Bloomfield bulls will be sold March 19 at the Bloomfield Livestock Auction Market. Dunlap bulls will be sold at the Dunlap Livestock Auction Market March

28. For more information contact Matt Deppe, seedstock manager, Iowa Cattlemen's Ass'n, PO Box 1490, Ames, IA 50014; ICA phone: 515-296-2266; Matt's cell: 515-468-7785; fax: 515-296-2261; [www.iacattlemen.org](http://www.iacattlemen.org).



# Simplifying Your Bull Selections

## Who says you can't have it all?



**A&B Payweight 7004**  
2/2/17 Reg. No. 18983356  
CED +12 BW -1.1 WW +65 YW +123 \$B 150.07  
BW 72, Ratio 92 WW 853, Ratio 116



**A&B Valor 7250**  
2/20/17 Reg. No. 18983430  
CED +13 BW +0.6 WW +75 YW +131 \$B 169.59  
BW 77, Ratio 92 WW 884, Ratio 120

*28th Annual Angus Bull Sale*  
**April 5, 2018**

*150 Bulls Sell!*  
110 Yearlings  
40 Fall Coming 2's

**www.abcattle.com**  
Like us on Facebook!

A & B Cattle

44718 873rd Rd.  
Bassett, NE 68714  
Office 402-684-2371  
Arlen Sawyer 402-760-0232  
Adam Sawyer 402-760-2623  
E-mail: [abcattle@gmail.com](mailto:abcattle@gmail.com)

**Sons Sell!**  
HA Cowboy Up 5405  
Basin Payweight 1682  
PA Valor 201  
Connealy Guinness  
Vision Unanimous 1418  
Baldrige Waylon W34  
A & B SpotLite 3065  
A & B Shooter 3421

by **LOGAN JACKSON,**  
University of Missouri

# Transferring Technology

*MU Division of Animal Sciences receives grant to develop The National Center for Applied Reproduction and Genomics.*

The Division of Animal Sciences at the University of Missouri (MU) College of Agriculture, Food and Natural Resources boasts many strengths, including its vast research and work with beef cattle reproduction and genetics. The faculty, who have responsibilities in research, teaching, extension and economic development, are experts in taking their findings and sharing them with farmers, ranchers and the Missouri community as a whole.

With the help of a \$300,000 grant from the USDA, the division will be able to expand on those leadership opportunities.

The grant, through USDA's National Institute of Food and Agriculture, will be used to develop The National Center for Applied Reproduction and Genomics (NCARG) in beef cattle. The goal of NCARG will be to promote the economic impact of the technologies MU Animal Sciences faculty have developed and are using every day. The focus is on giving farmers and ranchers the answer to the question: "What is the return on investment if I invest in reproductive or genomic technologies?"



PHOTOS BY TROY SMITH

"A center of this nature is the logical next step for our division," said MU's David Patterson. "With beef cattle, there is so much technology that could help operations. We want to help transfer that technology to industry participants at all levels."

"We're not just trying to fill people's heads with new knowledge. It's more about lighting a fire," said Jared Decker, an Extension beef geneticist at MU. "We're focused on helping farmers and ranchers understand the technology, but more than that, to trust the technology and identify ways they can use it. We want to educate producers and help them take that next leap."

The multidisciplinary grant is in partnership with the MU College of Veterinary Medicine. NCARG will have a big focus on continuing education for veterinarians, including educational and training opportunities for veterinary students, graduate

## CIRCLE L ANGUS

### Annual Bull Sale

# FEBRUARY 26, 2018

1:00 p.m. (MST) • Dillon, MT • Beaverhead Livestock Auction

#18957242 • 9-3-16

**Circle L Bedrock D67**

CE	BW	WW	YW	MB	REA	SW	SB
+0	+3.9	+72	+109	+60	+61	+65.76	+113.68

**Selling... GGPLD**

### 125 Angus Yearling & Long Yearling Bulls

#18952553 • 8-3-16

**Circle L Thunder 611**

CE	BW	WW	YW	MB	REA	SW	SB
+8	-5	+39	+71	+62	+31	+43.30	+84.14

#18944972 • 1-15-17

**Circle L Double XL 130E**

CE	BW	WW	YW	MB	REA	SW	SB
+10	+9	+60	+109	+82	+05	+56.68	+122.69

#18952535 • 8-1-16

**Circle L Special Forces 603**

CE	BW	WW	YW	MB	REA	SW	SB
+3	+2.7	+66	+120	+41	+76	+63.63	+160.82

**PAP, Fertility and Carcass Tested**

**First Breeding Season Guarantee**

**Breed-Leading Herd Sires x Legendary Cow Families**

#18832682 • 1-9-17

**Circle L Gus 107E**

CE	BW	WW	YW	MB	REA	SW	SB
+7	+4	+61	+96	+16	+87	+68.60	+123.94

**Circle L High Lite 186E**

CE	BW	WW	YW	MB	REA	SW	SB
+13	-2.4	+61	+103	+42	+11	+58.66	+134.12

**SIRES REPRESENTED:**

- Quaker Hill Rampage • MAR XXL
- Circle L Gus • Barstow Cash
- McConnell Altitude • Basin Payweight 107S
- Conneally Guinness • SAV Resource
- Monen Bedrock • TC Thunder
- Holders Special Duty

Please contact us for more information or to be included on our mailing list.

## CIRCLE L ANGUS

62211 Hwy. 43 • Wise River, MT 59762

**CORY & KARI LAMEY**  
circlelangus@yahoo.com  
406-832-3535 or 406-491-7363

visit us online: [www.circlelangus.com](http://www.circlelangus.com)



"We're focused on helping farmers and ranchers understand the technology, but, more than that, to trust the technology and identify ways they can use it," said Jared Decker. "We want to educate producers and help them take that next leap."

students, farmers, ranchers and allied industry professionals.

"This center again underscores the collaborative environment between schools and programs that exist at Mizzou (MU) to advance training for veterinary and animal science students, and research that benefits Missouri stakeholders," said College of Veterinary Medicine Interim Dean Carolyn Henry.

The idea for a center of this type has been discussed amongst faculty in the Division of Animal Sciences for the past few years. David Patterson and Mike Smith, both professors of reproductive physiology, have taught numerous full-day sessions at American Veterinary Medical Association meetings. With all of the programs in place at MU, Patterson and Smith had many discussions on ways to share that research on a national level.

"Our reproductive and genomic research is so closely tied — and both are great strengths within our division," Patterson said. "A center of this nature is the logical next step for our division. With beef cattle, there is so much technology that could help operations. We want to help transfer that technology to industry participants at all levels."

Patterson has led the reproductive extension work in the Division of Animal Sciences, with Decker leading the genetic extension efforts.

There will be a big focus on the economic impact of using these technologies, as well. Scott Brown, an assistant extension professor in the Division of Applied Social Sciences, will lend his expertise in agricultural and applied economics to the center.

"The returns available to farmers from adopting these technologies will ultimately drive their use, and it is critical we show the increase in profitability that can result from integrating reproductive and genetic technologies in commercial herds," Brown said.

NCARG already has received numerous letters of support from veterinary medical professionals, U.S. beef breed associations, pharmaceutical

houses; genomic testing companies; industry consultants; the artificial insemination industry; branded-beef and feeder-calf programs; and state agencies, organizations and companies.

NCARG is still in the beginning stages of development. The group is seeking a location to house NCARG and is continuing to search for partnerships.

"We're taking the model we've

developed in Missouri over the past 20 years and making it a national center," Decker said. "We're hoping to spread the model of integrating research and extension in genetics, reproduction and economics — and putting that together. That's worked really well in Missouri. Now, let's spread it nationally."

Along with Patterson, Decker, Smith and Brown, Bill Lamberson, Scott Pook,

Thomas Spencer and Jeremy Taylor were part of the development of the grant.



**Editor's Note:** Logan Jackson is an Agricultural Research Center news strategist in the Office of Marketing and Communications for the University of Missouri College of Agriculture, Food and Natural Resources.

## OPEN 8 GENETICS

## Third Annual BULL SALE

Tuesday, MARCH 6, 2018

*Powder River County Fairgrounds*

1:00 PM (MT) • BROADUS, MONTANA

Offering 55 Angus and  
SimAngus™ Bulls

*New Sale Location,  
Same Customer Service*

### SELLING SONS OF:



Musgrave Aviator



Connealy Capitalist



Barstow Cash



Coleman Knight



Open 8 Thunder 504



Sitz Thunderbolt 0198

### Win A Bull...

At the conclusion of the sale one lot number will be drawn. The buyer of that lot will receive a credit equal to the final sale average!

### Win A Heifer...

Junior Angus Youth - if your parents register for a buyer number, you will be entered to win a registered Angus Capitalist daughter. Youth ages 8-20 as of January 1 qualify to win the heifer and are eligible to show.

*Breeder of the 2015 NILE Champion Merit Heifer.*

20 Capp Road, Powderville, MT 59345

**ALLIED**  
GENETIC RESOURCES  
Marty Ropp 406-581-7835  
Corey Wilkins 256-590-2487  
www.alliedgeneticresources.com

MANAGERS Danny and Dani Mae Krantz  
406-436-2889 or 406-240-1550

open8genetics@yahoo.com  
[www.open8genetics.com](http://www.open8genetics.com)

OWNERS Dean and Karen Wang  
406-978-3672

Visit our website and follow us on FaceBook for the latest news and updates.

