

# GIZMOS & GADGETS

## Products for use on farms and ranches

Compiled by Shauna Hermel, editor

In this month's edition we highlight two new herbicides, a new line of forage sorghums, a mineral supplement to help cattle through transition periods, truck/trailer product enhancements, a guide to conservation, new tractors and an ammonia-control product.

### ►►► Herbicide solutions

Alligare announces federal EPA approval for two new products using the aminopyralid active ingredient to control broadleaf weeds: Whetstone™ Herbicide for use in noncrop areas such as bare ground sites, utility and energy rights-of-way, and natural areas; and Gunslinger® AMP Pasture Herbicide for vegetation management in range and pasture lands, conservation



reserve program (CRP) acreage, and wildlife management areas. Aminopyralid provides effective pre- and postemergent control for select vines, broadleaf weeds and brush. It is a member of the picolinic acid family of herbicides, which also includes clopyralid, picloram and triclopyr — active ingredients already included in the company's product portfolio. Aminopyralid works as a plant growth regulator, causing uncontrolled plant cell division, resulting in tissue destruction and plant death. Whetstone will be packaged in 6x1 quarts and 2x2.5-gallon (gal.) cases. Gunslinger AMP will be packaged in 2x2-gal. cases, 30-gal. drums and totes. The company plans for the first shipments of Whetstone

and Gunslinger AMP to commence immediately following state regulatory approval, which was anticipated before the end of 2020.

### ►►► Premier sorghum forages

Alta Seeds introduces Empr™ Premier Forages, a complete line of forage sorghum, sudangrass and sorghum-sudan hybrids. Empr Premier Forages are top-of-the-line, carefully selected hybrids that consistently outperform and outproduce in field and feed.

The forage line offers the latest genetic advancements built on a wide variety of hybrid types that provide solutions for specific grazing and silage needs, including:

- Aphix™ Elite Sugarcane Aphid (SCA) Tolerance to protect against one of the most destructive pests to Southern grain and forage sorghum.
- BMR-6 for increased palatability and digestibility, supporting more weight gain and milk production with yields equal to or greater in feed value than corn silage.
- Brachytic Dwarf for superior standability and high leaf-to-stalk ratios for high tonnage.
- Dry Stalk, a reduced moisture level for earlier baling and storage.
- Photoperiod Sensitivity for a wide harvest window.

"In side-by-side comparisons, our Empr forage sorghum silage is equal to or better than corn silage, in many cases with fewer input costs," says Mark Kirk, Eastern/Western regional account manager. While sorghum forages are well-known to be more drought-tolerant than other crops, Empr hybrids offer excellent standability through all kinds of extreme environments.

Learn more about available hybrids at <http://bit.ly/1021ABBx3>.

### ►►► Nutritional help through transitions

Through its highly palatable self-fed delivery system, Midcontinent Livestock Supplements' (MLS) Herd Manager Transition Mineral supplies critical nutrients to cattle when they are going through periods of transition. Key features include:

- Highly palatable self-fed supplement to encourage intake and stimulate appetite;
- Targeted formulation with specific minerals, including Zinpro Availa® 4 trace minerals, to help provide electrolyte balance that can be easily compromised with abrupt diet changes due to stress or other transition challenges;
- Low intake ensures low cost per head per day for increased profitability;
- Improve overall health and performance by encouraging feed intake at the bunk;
- Celmanax™ SCP technology for optimal gut health and defense against pathogenic bacteria, with improved and rapid immune response when disease conditions exist; and
- Inclusion of chromium, high levels of vitamin E and B vitamins for a broad and robust approach that helps ensure multiple performance benefits such as improved rumen function, antioxidant defense and rapid recovery times when exposed to immune challenges.

For more information or to get in touch with an MLS territory manager, visit [mlstubs.com](http://mlstubs.com) or send us an email at [info@mlstubs.com](mailto:info@mlstubs.com).

### ►►► Compact tractor line

Kubota Tractor Corp. has announced the launch of the new L60LE Series. Three new models

### ►►► Guide to conservation stewardship

As farmers across the country start signing up for the program, the National Sustainable Agriculture Coalition (NSAC) released its updated *Farmers' Guide to the Conservation Stewardship Program* (CSP). As in previous years, this version of the guide helps walk through the application and implementation processes for CSP. There are also several additions to the guide in 2020:

- easy-to-read graphics explaining the program;
- a full list of CSP-eligible practices;
- profiles of farmers who use CSP;
- a walk-through of how to sign up for CSP;
- an explanation of the new ranking tool "CART";
- details on special CSP considerations for farmers of color;
- how CSP benefits beginning farmers and ranchers;
- CSP for organic farmers; and
- recent changes to the program.

The *Farmers' Guide to CSP* is available for free download on the NSAC website at <https://sustainableagriculture.net/publications/>.



have been added to complete the series, which now offers a total of four models — two cab models and two ROPS models. Ranging from 37 to 42 gross hp, the new series offers an array of deluxe quality and comfort features at an affordable price point, according to the company.

Built with a heavy-duty large chassis, all-metal hood and fenders and equipped with a Kubota-built diesel engine, this series provides the quality and durability Kubota is known for. Kubota's electronic HST Plus Transmission comes standard and is designed to provide smooth, quiet operation and maximize productivity and ease of use.

With features like Stall Guard and Auto Throttle Advance, the HST Plus transmission allows any operator, no matter the experience level, to feel and look like a professional. Other performance



Kubota L60LE Series tractors

features include a heavy-duty three-point hitch with a lift capacity of 2,646 lb. (24 in. behind the pin) on the L3560LE and 2,760 lb. (24 in. behind the pin) on the L4060LE.

Additionally, with available options for the LA555 or LA805 front loader, the L60LE Series has a loader lift capacity of up to 1,715 lb. (at pivot pin) and a front loader maximum lift height of up to 105 in. (at pivot pin). The BH77 and BH92 backhoes are performance-matched with the L60LE Series to deliver more power and greater capacity. Thanks to the full-flat deck and a quick attach/detach mounting system, the backhoes deliver

optimal legroom for maximum operator comfort.

A mid-PTO option can also be used with a variety of performance-matched, front-mounted snow-removal implements. The L60LE Series can be

equipped with a full line of performance-matched implements and attachments from Land Pride.

The new series includes premium features such as a larger chassis size, low engine noise, high-performance HST Plus transmission, smooth loader operation and spacious operator platform, all at an unexpected affordable price.

All cab models come standard with the wide, deluxe Grand L cab with heater and A/C. Many optional features are available to outfit the tractor to meet exact customer needs. Optional accessories include an air-ride seat, ROPs canopies, front weights, rear hydraulic remote

valves, and many more to choose from based on your needs.

### ▶▶▶ Two new tractor models

KIOTI Tractor, a division of Daedong-USA Inc., has added two all-new models to its CS Series. The CS2220 and CS2520, now available at Kioti dealers across North America, are easy to operate, yet powerful enough to meet customer demands, making them perfect for a wide variety of tasks, says the company. The new models feature an ergonomic operator station, with standard features including a tilt wheel with power steering, a joystick valve with quick attach and detach loaders, and a precision-built Kioti diesel engine.

The CS2220 and CS2520 are compatible with Kioti's new SB2420 backhoe and SL2420 front-end loader. The SL2420 offers quick attach and detach and dual bucket cylinders, with a maximum lift height of 73.7 in. and lift capacity at full height to pivot pins of 1,062.3 lb. The new "pinless" design enables the operator to quickly and efficiently remove or install the loader in minutes, without having to remove or install loader pins to secure it to the tractor, and the quick-attach system on front makes switching attachments a breeze.

The CS2220 and CS2520 come standard with a joystick valve to give operators convenient, comfortable and precise control over the loader to lift, lower and carry loads anywhere, regardless of experience or skill level. The new models are also compatible with KIOTI's SM2454 and SM2460 mid-mount mowers, both of which include drive-over decks for easy attach and detach.

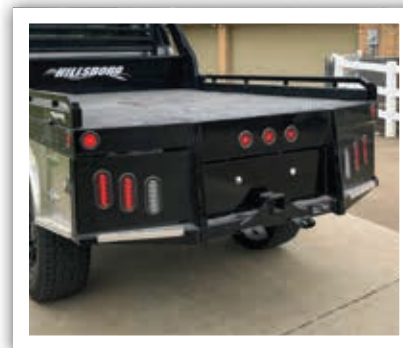
A 21- or 24.5-hp precision-built Kioti diesel engine boasts a large power output with low fuel consumption. Engaged by a single lever, four-wheel drive is standard across these two new CS Series models, both of which can reach forward speeds of up to 9.57 mph.

These two tractors feature a streamlined hood design to improve

### ▶▶▶ Truck/trailer enhancements

Hillsboro Industries introduces several new product enhancements for 2021.

- ▶ All Hillsboro rear receiver hitches, both in aluminum and steel truck bed models, will have the 25,000-pound (lb.) hitch rating. The 2½-inch (in.) rear receiver hitch comes standard with a 2-in. reducer. This change will allow customers to haul bigger loads.
- ▶ 2000 Series aluminum truck beds have been upgraded to have the same headache rack as all other Hillsboro aluminum truck beds. The HD adjustable headache rack now features the square aluminum tube louvers standard, providing enhanced strength and styling.
- ▶ The new adjustable gate with slider on Endura livestock trailers, a big brother to the Hillsboro Industries adjustable center gate, will now have an optional slider. Both the slider option and the standard adjustable center gate feature an HD Extruded framework. Both options are structurally manufactured the same. The customer now has a choice between the slider and full-swing version.
- ▶ The aluminum utility trailer toolbox/spare tire combo option provides a unique design that is a standalone option compatible with optional front rock guard. It features a top-opening design with gas spring-assisted lid and a lockable, sealed push-button latch. It measures 30 in. wide, 28 in. tall and 16 in. deep for a 5.5-cubic-foot (cu. ft.) storage volume.



Hillsboro rear receiver hitch



2000 Series aluminum truck bed



Endura livestock trailer

For more information, contact Hillsboro Industries at 800-835-0209 or visit <https://www.hillsboroindustries.com/>.

operator visibility with or without a loader installed. Additionally, the vertically opening hood provides easy access to engine maintenance and service points. The rear PTO and high-capacity three-point hitch can accommodate a variety of implements. Plus, the standard mid PTO (2,200 rpm) provides the ability to operate implements, such as a midmount mower or snowblower.

### ▶▶▶ **Ammonia, waste volume control**

Inadequate ventilation in barns that animals inhabit during the winter months can often lead to pneumonia and respiratory illnesses caused by ammonia build-up from waste.

To control ammonia, other offensive gasses and waste volume in animal housing during the winter months, Brookside Agra recommends its all-natural Ammocure line of products. Proven to reduce ammonia levels by up to 50% or more when added to a ration, Ammocure helps improve air quality, feed conversion and average daily gain, plus helps increase feed intake for better animal health and more comfortable working conditions for employees.

Made in the United States, the product is a specially formulated source of saponin, a natural wetting agent derived from the *Yucca schidigera* plant, for addition to animal feeds. Nontoxic to all species and sizes of livestock, poultry and small animals when used as directed, all-natural Ammocure is available in meal, powder and liquid formulations.

The liquid formulation is proven to control odors and reduce ammonia emissions from manure when added to feeds, while the powder and meal formulations are recommended to control waste volume, ammonia and offensive gasses produced by livestock. Ammocure powder and meal can also be used as a flavoring agent in commercial livestock feeds.

The products contain no fillers or carriers such as zeolite or calcium carbonate that can often inhibit the

activity of the saponin. Ammocure is also listed as a GRAS LIST safe-to-use ingredient.

For more information visit <https://www.brookside-agra.com/categories/specialty-feed-additives>.

### ▶▶▶ **Food chain podcast**

The entire food chain — from producers to processors and beyond — has a new source of timely and relevant insights through *Food Chain Chats*. This new podcast, brought to the industry by Arm & Hammer Animal and Food Production, focuses on people who make a difference in the food chain from farm to fork. Each episode will provide unique perspectives, trends and actionable information from Arm & Hammer experts and industry leaders.



The inaugural episodes included: “That Was Then. This is Transformational Change,” which revealed how science and innovation led to changes in how the company serves its customers. It shares how internal brainstorming uncovered unmet industry needs and opportunities that set the company on a path toward significant expansion and a global presence.

Subsequent episodes feature experts discussing new food safety standards, meeting consumer demands for antibiotic-free production, and how the microbiome affects animal and bird performance.

Catch *Food Chain Chats* through iTunes/Apple, Spotify, Google Podcasts, Stitcher and TuneIn, or go to [FoodChainChats.com](https://FoodChainChats.com). |

---

Editor's note: Submit new products for potential publication to Shauna Hermel, editor, at [shermel@angus.org](mailto:shermel@angus.org).