

Veterinary Link: Consider toxic plants

by **BOB LARSON**,
professor of production
medicine, Kansas State
University



An animal health aspect related to pasture management is to recognize that some plants can be poisonous to cattle. Most pastures contain at least some toxic plants, so just because toxic plants are present does not mean a rancher will experience losses in the herd. Many

poisonous plants do not taste very good to cattle, so they are present without being grazed. However, when forage is limited due to drought or overgrazing, toxic plants are more likely to be consumed. There are also poisonous plants that cattle seem to prefer over

other forages, but many times these attractive toxic plants do not cause problems because they are present in small enough quantities in a pasture that cattle do not consume a toxic dose.

Toxic plants and their effects

Cattlemen throughout history have known that some plants can be toxic to their animals. Poisonous plants that cause rapid death, long-term illness, or abortions and birth defects cause losses to herds in all parts of North America. Some poisonous plants are only present in a few small areas of the United States, while others are found over a wide geographic area. Some plants are poisonous during all phases of growth, while others are only poisonous (or more dangerous) during certain stages of growth or certain times of the year (learn more at www.ansci.cornell.edu/plants/index.html and www.vth.colostate.edu/poisonous_plants/report/search.cfm).

Trees or shrubs that can be toxic to cattle include oak, Japanese yew, buckeye and ponderosa pine (abortion). Toxic weeds include pigweed, locoweed, water hemlock, poison hemlock, milkweed, larkspur and perilla mint. Fescue and ergot toxicosis are due to toxins found in fungus that can infest otherwise safe plants. Blue-green algae, which can be present on stagnant water in late summer, is highly toxic to cattle. Nitrates (Johnsongrass, Sudan-sorghum hybrids, kochia, millet, lamb's quarter) and cyanide (cherry, Johnsongrass, Sudan-sorghum hybrids, milo, arrowgrass) are components normally present in some plants that can increase to dangerous levels during certain growing conditions. Additionally, some plants accumulate toxic levels of the mineral selenium (locoweed, goldenweed, ironweed, saltbrush).

Plants that cause damage to the heart will generally cause a very rapid death if a large enough dose is eaten. Because these plants can act quickly, often finding one or more dead animals is the first sign of a problem. If animals are detected early, or if the amount consumed is less than a lethal dose, cattle consuming heart-toxic plants may appear weak and depressed, and if the animal is examined by a veterinarian, a rapid or irregular heart rate may be detected. Purple mint (or perilla) is a common weed in some parts of the United States (particularly the Southeast) that can cause a type of pneumonia that arises due to damage to the walls of the air sacs in the lungs. Death can occur within 12 to 24 hours after eating a lethal dose, and affected cattle struggle to get enough air into their lungs.

Plants that can be toxic to the liver or kidney seldom cause a rapid death, but instead a slow decline in health and body condition that may or may not result in death.

The liver is important for many body functions and acts to detoxify a

Pursuing A New Horizon

SPRING PERFORMANCE SALE

MONDAY, APRIL 9, 2018

1:00pm MDT • Sale at St. Onge Livestock

TOTAL PERFORMANCE BULLS & HEIFERS
BY OUR OUTSTANDING HERD SIRES & AI SIRES



OTHER SIRES: HERD SIRES: Vermillion Sirloin B587 • Mill Bar Code Black 8554
AI SIRES: Mytty Source • EF Commando 1366 • Connealy Countdown
PA Power Tool 9108 • SAV Resource 1441 • Musgrave Aviator



BREEDING ANGUS CATTLE FOR OVER 65 YEARS!

Mike & Sandra Baker
H 605-642-9785
C 605-641-0502
lemarangus@gmail.com

11440 Angus Lane • St. Onge, SD 57779 • www.bakerlemarangus.com

- Visitors Always Welcome -

Ranch located 5 miles west of St. Onge on Hwy 34 or 6 miles east of Belle Fourche on Hwy 34

THE BRAND THAT WORKS THAT FILLS YOUR HERD SIRE NEEDS

number of chemicals normally found in the body. Consuming plants that cause damage to the liver can result in the buildup of toxins from eating grass that would normally be removed by a healthy liver. These toxins can cause the skin to become very sensitive to sunburn and can cause other signs of liver failure, such as weight loss and poor performance.

Some plants — particularly plants such as oak trees that accumulate tannins — are toxic to the kidney. Cattle with kidney damage may show signs of reduced appetite, rapid weight loss and increased water intake.

Some plants are toxic to the nervous system. Examples include some types of ryegrass, locoweeds and water hemlock. Cattle that eat these plants may suffer from rapid death or longer-term weight loss and nervous system signs, depending on the specific plant and the amount consumed. Signs of nervous system problems include staggering, apparent blindness, exaggerated movements and hyperexcitability.

Abortion or the development of birth defects can occur when pregnant cattle consume certain toxic plants. Abortions caused by toxic plants are often difficult to diagnose, and the birth defects caused by some toxic plants are the same or similar to defects caused by genetic problems or viral infection. Locoweeds, tobacco, lupine and poison hemlock are known to cause birth defects in calves in certain situations when pregnant cows consume these plants.

Talk to your vet

To diagnose suspected plant poisonings, you should work with your veterinarian and a veterinary diagnostic laboratory. Your veterinarian can help you develop an accurate history and timeline for the problem.

To identify the cause of losses due to poisonous plants, the pasture or drylot and any other feedstuffs should be inspected; both live and dead animals should be examined; and diagnostic samples of plants, blood and tissues should be properly collected and then evaluated by trained diagnostic laboratory personnel.

The presence of toxic plants in pastures or hays is not proof that cattle have been harmed by the plants. However, finding evidence of consumption of potentially toxic plants by animals, either by observing evidence of grazing of suspected plants or by finding parts of these plants in the digestive tract of a dead animal is highly suggestive of poisonings.

To control and prevent losses due to toxic plants, producers should be able to recognize the plants in their area that are a concern and possibly use herbicides to spot-kill known toxic plants. However, one frustration when dealing with toxic plants is that toxic agents or palatability of some plants are increased during the wilting stage of plant death, and spraying

with herbicide can cause an increase in toxicity. Therefore, one of the most obvious control measures, spraying toxic plants, may temporarily make the situation worse rather than better. Always consult with weed specialists to determine the best herbicide product and timing choices when attacking a poisonous weed problem.

Because removing all toxic plants

from a range or pasture is not likely to be practical or successful, good grazing management using stocking density, fencing, water development and salt/supplement placement to maintain good pasture health will minimize the incentive for cattle to graze toxic plants.

If it appears that a toxic-plant problem is occurring, cattle should be removed from the suspected pasture immediately

and a veterinarian should be contacted. It is important to work with veterinarians, extension agents, Natural Resources Conservation Service specialists, and range specialists who can all help develop a plan to keep pastures healthy and minimize the risk of toxic-plant poisonings.



Simplifying Your Bull Selections

Who says you can't have it all?



A&B Twenty X 6516
9/6/16 Reg. No. 18850620
BW +1.1 WW +59 YW +111 \$W 65.03 \$B 128.54
15.9 inch REA with WR/106, YR/108

- ✓ Bulls developed to insure longevity, no creep
- ✓ Free of all known genetic defects
- ✓ i50K tested, parentage verified, enhanced EPDs
- ✓ Carcass and performance evaluated, semen tested
- ✓ Unconditional guarantee regardless of price



A&B Payweight 6469
8/27/16 Reg. No. 18850604
CED +16 BW -2.8 WW +58 YW +117 \$B 127.64
Ranks in the top 1% of the breed for CED!

28th Annual Angus Bull Sale

April 5, 2018

1 p.m. at the Ranch

150 Bulls Sell!

110 Yearlings
40 Fall Coming 2's

www.abcattle.com

 Like us on Facebook!

A & B Cattle
44718 873rd Rd.
Bassett, NE 68714
Office 402-684-2371
Arlen Sawyer 402-760-0232
Adam Sawyer 402-760-2623
E-mail: abcattle@gmail.com

Sons Sell!
HA Cowboy Up 5405
Basin Payweight 1682
PA Valor 201
Connealy Guinness
Vision Unanimous 1418
Baldrige Waylon W34
A & B SpotLite 3065
A & B Shooter 3421
A & B Twenty X 3149





Midcontinent Livestock Supplements

mlstubs.com

PROVEN PERFORMANCE

Valley Mills, Texas
888-657-8827

Ellendale, North Dakota
800-450-8827

Moberly, Missouri
800-406-4609



MLS Mineral Tubs with Altosid® IGR Horn Fly Control.

MLS #1 HI PERFORMANCE

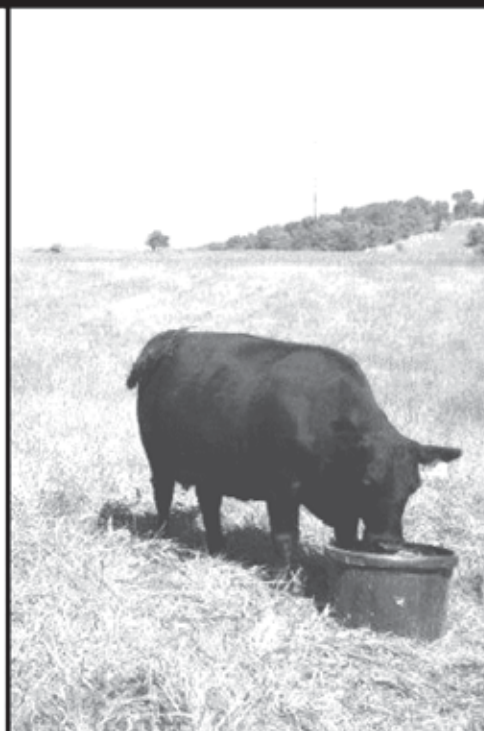
- ▶ Balanced concentration of vitamins, minerals, energy, and protein
- ▶ For cattle needing both protein and mineral supplementation
- ▶ Weatherproof, no waste supplement delivery system

MLS #12 BREEDER MINERAL

- ▶ Balanced Tub Mineral Supplement + Energy
- ▶ Added Organic Copper, Zinc, Manganese & Cobalt
- ▶ Higher Conception Rates & Faster Breed Back

MLS #12 HI MINERAL

- ▶ Tub Product with Controlled, Consistent Consumption
- ▶ Concentrated Levels of Vitamins & Trace Minerals
- ▶ Replaces Loose Mineral Products



GET THE "MLS" SUMMER MINERAL PROGRAM ADVANTAGE

SCHELSKE *Angus* PRODUCTION SALE

April 4, 2018 • 1 p.m. • Huron, SD

Magness Livestock Auction • Sale Barn Phone 605-352-8759



Schelskes Paypal 6234A

High Seller from our 2017 Sale selling to Edgar Bros.



Sires represented:

SAV Resource
Payweight 1682
S Whitlock
SAV Ten Speed
SAV Seedstock
SAV Renown
SAV Conversation
Sitz Thunder 547B
MAR Ten-X 402

*Selling 90 Yearling Bulls and 65
Open Yearling Replacement Heifers*

SCHELSKE *Angus*

Aaron, Melanie, Cadee & Mason Schelske
Home 605-849-3505 • Cell 605-350-1137
Mark & Linda Schelske
Home 605-849-3534 • Cell 605-350-7520
Adam, Marissa, Holden & Hayes Schelske
Home 605-849-3533 • Cell 605-350-2846

**Visitors welcome
anytime!**
Please call ahead,
we don't want to miss you.

Performance, Ultrasound and Semen Tested

INCREASE COW HERD PROFITS

BY REDUCING INPUT COSTS

Linebred for Maternal Efficiency, Longevity, Performance and Predictable Uniformity!

OHLDE CATTLE CO.



SELLING 100 BULLS
Two-Year-Old, 18-Month-Old
and Yearling Bulls

SELLING 100 FEMALES
Registered and Commercial

SEMEN AVAILABLE

On more than 30 OCC bulls that are breed-leading sires combining Calving Ease, Performance, \$EN and TRUE Fleshing ability.

- * Proven the world over as the easiest fleshing most grass efficient Angus cattle.
- * Proven by their \$W and \$EN values.

OCC *Basic* BLACKS

Bull Sale Monday, April 16, 2018

1 p.m. • MARYSVILLE, KANSAS

Contact Ohlde Cattle Co.
for sale books or semen

Bid online Live **Auctions.TV**

Basic Blacks and Angus II are trademarks of Ohlde Cattle Co.



OHLDE CATTLE CO.

Tim, Trudy, Jake and Jordon Ohlde
1352 2nd Road • Palmer, KS 66962
1-800-NEW BULL

Email: ohldecatt@ohldecattle.com



OCC PAXTON 730P

Progeny proves he is one of the best all around bulls in the Angus breed.

CED	BW	WW	YW	\$W	\$EN
+13	-1.3	+40	+65	+50.18	+33.38



OCC EMBLAZON 854E

An "Industry Standard" for siring predictability and uniformity.

CED	BW	WW	YW	\$W	\$EN
+13	+.4	+42	+66	+42.19	+24.75



For more information, visit our website
www.ohldecattle.com

EPDs as of 2/21/18