

## Don't handwater pigs when it's -0°



Shauna Hermel, editor  
shermel@angus.org

I don't remember what year it was. I don't remember what I got for Christmas or, more importantly, if we were even able to get to church that week. I do remember the cold, and I do remember the pigs.

It was one of my Christmas vacations — a long stretch on that word — during my collegiate experience at the University of Missouri. While northeast Missouri may get cold, it seldom dips far below zero, and it is even more rare for it to stay cold for long. That year was different.

I can't tell you just how cold it got or for how long, but I remember helping Dad water that group of pigs by hand in long troughs when we couldn't get the waterers thawed. Let me tell you, that ain't fun.

Looking back, if we'd have had cellphone cameras, we probably could have taken video to give us some good belly laughs now; but, it was no laughing matter then.

Cows, of course, are a little more winter-hardy, and we weren't calving in winter back then. You have to love those good Angus cows.

Well, God never gives you more than you can handle, and I'm sure timing of the freeze provided more hands for the family to deal with the situation. It did instill an "I never want to do this again" mindset, which meant either get rid of the pigs or get prepared for the next deep freeze. In those days, the pigs were paying for the cows, so better preparing for the next time was our only option.

### Preparing for winter

Even though cows are more self-sufficient and cold-hardy, their care still requires some preparation for even the mildest of winters. Getting the herd in the right body condition, stockpiling a winter feed supply, readying facilities and equipment for the elements — all are routine management strategies necessary every year.

Still, have you prepared for that once-a-generation storm? While the local weather forecast might give you time to batten down the hatches for an individual storm, it certainly doesn't provide enough time to prepare for the big one.

The 2022 *Old Farmer's Almanac* suggests we prepare for a "season of shivers," predicting bone-chilling, below-average temperatures across most of the United States. In some areas, the *Almanac* predicts, the cold will be accompanied by lots of snow. With 230 years of history, the *Almanac* claims an 80%-accurate weather forecast.

In this issue we focus on prepping the herd for winter, minding to those routine winter preparedness strategies, but also highlighting what people who have lived through one of those big storms will do to stay prepared for the next one.

We also celebrate the accomplishments of those honored for their commitment to excellence by Certified Angus Beef. It's really a tribute to the Angus cow and her adaptability to multiple environments — some harsh — to see the broad geography represented. |

## CERTIFIED ANGUS BEEF LLC

206 Riffel Rd., Wooster, OH 44691-8588; 330-345-2333; fax: 330-345-0808; website: [www.cabcattle.com](http://www.cabcattle.com)

**John Stika**, president  
**Brent Eichar**, senior executive vice president, operations and finance  
**Tracey Erickson**, senior executive vice president, marketing  
**Bruce Cobb**, executive vice president, production  
**Steve Ringle**, executive vice president, business development  
**Pam Cottrell**, senior vice president, people and culture

**SUPPLY DEVELOPMENT DIVISION**  
**Marilyn Conley**, administrative assistant  
**Kara Lee**, assistant director, producer engagement, Leavenworth, Kan.  
**Paul Dykstra**, assistant director, supply management and analysis, Chappell, Neb.

**PRODUCER COMMUNICATIONS DIVISION**  
**Morgan Boecker**, manager  
**Abbie Lankitus**, specialist

Produced and published five times per year by Angus Media in cooperation with the American Angus Association and Certified Angus Beef LLC.  
3201 Frederick Ave. • Saint Joseph, MO 64506-2997  
phone: 816-383-5200 • fax: 816-233-6575  
office hours: (M-F) 8 a.m.-4:30 p.m. (Central time)  
website: [www.angus.org/Media](http://www.angus.org/Media)

**Brett Spader**, president

### EDITORIAL

**Shauna Hermel**, editor, Angus Beef Bulletin  
**Miranda Reiman**, senior associate editor, Cozad, Neb.  
**Kasey Brown**, part-time associate editor  
**Heather Lassen**, special projects editor  
**Julie Mais**, editor, Angus Journal  
**Megan Silveira**, assistant editor, Angus Journal  
**Mary Black**, graphic artist  
**Jaime Albers**, graphic artist  
**Craig Simmons**, contract designer  
**Barb Baylor Anderson**, field editor, Maryville, Ill.  
**Kindra Gordon**, field editor, Whitewood, S.D.  
**Becky Mills**, field editor, Cuthbert, Ga.  
**Paige Nelson**, field editor, Rigby, Idaho  
**Troy Smith**, field editor, Sargent, Neb.

### ADVERTISING

**Jacque McGinness**, advertising team lead, circulation coordinator  
**Kathy LaScala**, corporate sales manager  
**Kaysie Wiederholt**, coordinator/graphic artist  
**Monica Ford**, graphic artist  
**Melinda Cordell**, proofreader

### PRINT SERVICES

**Gail Lombardino**, print media team leader  
**Sharon Mayes**, senior coordinator  
**Julie Martinez**, coordinator  
**Rayne Wilson**, coordinator  
**Julie Murnin**, coordinator/graphic artist  
**Jenna Kauzlarich**, coordinator/graphic artist  
**Susan Bomar**, graphic artist  
**Leann Schleicher**, graphic artist  
**Brianna Wieberg**, photo coordinator/proofreader  
**Ashley Petty**, assistant coordinator/proofreader  
**Rachel Witt**, assistant coordinator/proofreader

### WEB SERVICES

**Andy Blumer**, web services team leader  
**Bruce Buntin**, coordinator  
**Lauren Hitch**, designer  
**Mike Nolting**, frontend developer

### DIGITAL SERVICES

**Alex Blake**, digital marketing team leader  
**Max Stewart**, senior creative manager  
**Mackenzie Brewer**, digital coordinator  
**Bailey Cole**, marketing coordinator

### PHOTO SERVICES

**Erin Fleenor**, coordinator  
**Kathrin Gresham**, photo coordinator

### BOARD OF DIRECTORS

**Jerry Connealy**, chairman  
**Mark McCully**, vice chairman  
**Kenny Miller**, secretary-treasurer  
**James Coffey**, **Richard Dyar**, **Smitty Lamb**,  
**Jonathan Perry**, **Darrell Stevenson**  
**Bob Brunker**, industry representative



To submit a change of address or to unsubscribe, please email your request to [circulationcoordinator@angus.org](mailto:circulationcoordinator@angus.org) or call 816-383-5200. Please include the number above the address on the mailing label along with the name and address of the current subscription.



Performance

# HERD of the HEARTLAND

Sale

Friday • 1 pm • At the ranch • 15 miles west of Vinita, OK

**121** Registered Bulls  
120 Registered Angus Bulls  
1 Registered Red Angus Bull

**200** Fall Calving Commercial  
Angus and BWF First Calf Heifers

**50** Fall Calving Commercial  
Angus Cows



Sample of females selling.



\*19628616  
9/30/19

**Spur Dividend 9390** [RDC]

Sire: \*Spur Dividend 4270 [RDC-AMF-XF]

CED BW WW YW MK MB RE \$B \$C  
+7 +2.7 +69 +136 +30 +.81 +.89 +191 +307



\*19624134  
9/15/19

**Spur Mainstay 9308**

Sire: \*Connealy Mainstay [AMF-CAF-XF]

CED BW WW YW MK MB RE \$B \$C  
+6 +2.1 +75 +134 +25 +.83 +.82 +175 +311



\*19795860  
12/18/19

**Spur Southside 9532** [DDF]

Sire: Connealy Southside 0483 [AMF-CAF-XF]

CED BW WW YW MK MB RE \$B \$C  
-2 +3.9 +87 +157 +30 +.68 +1.32 +193 +322



\*19611462  
9/30/19

**Spur Glory 9146** [DDF]

Sire: \*Connealy Glory 413C

CED BW WW YW MK MB RE \$B \$C  
+1 +4.0 +92 +151 +20 +.89 +.79 +181 +293



\*19611275  
11/1/19

**Spur Surety 9120**

Sire: \*Thomas Surety 6726

CED BW WW YW MK MB RE \$B \$C  
+9 -.1 +73 +123 +30 +.76 +.66 +160 +277



\*19628625  
11/13/19

**Spur Silver Phoenix 9402**

Sire: \*Spur Silver Phoenix 7532 [AMF-CAF-XF]

CED BW WW YW MK MB RE \$B \$C  
+7 +2.2 +62 +123 +26 +.94 +.69 +185 +288



\*19611265  
10/25/19

**Spur Surety 9134**

Sire: \*Thomas Surety 6726

CED BW WW YW MK MB RE \$B \$C  
+8 +.8 +64 +117 +30 +1.12 +.76 +192 +290



\*19644602  
9/19/19

**Spur Playbook 9208** [DDF]

Sire: \*TEX Playbook 5437 [AMF-CAF-XF]

CED BW WW YW MK MB RE \$B \$C  
+12 +1.1 +66 +122 +37 +.49 +.44 +149 +275



\*19620898  
11/10/19

**Spur Denominator 9322** [DDF]

Sire: +\*Baldrige Denominator D246 [DDF]

CED BW WW YW MK MB RE \$B \$C  
+16 -2.8 +56 +102 +23 +1.30 +.51 +155 +244



\*19611241  
9/25/19

**Spur Mainstay 9110**

Sire: \*Connealy Mainstay [AMF-CAF-XF]

CED BW WW YW MK MB RE \$B \$C  
+10 -.4 +78 +127 +26 +.69 +1.06 +165 +282



\*19613966  
9/17/19

**Spur Phoenix 9232**

Sire: H&H Phoenix 8080 [DDF]

CED BW WW YW MK MB RE \$B \$C  
+3 +2.0 +73 +133 +30 +.62 +.63 +171 +283



9/9/19  
4210012

**Spur Franchise 9354**

CED BW WW YW Milk MB RE ProS HB GM  
+14 -1.1 +65 +109 +21 +.71 +.52 128 47 +81



find us on facebook

Vinita Office

918.256.5850 • Fax 918.256.6638  
PO Box 307 • Vinita, OK 74301

Clay Hartley, Owner

Cell 918.633.2580

Jeff Owen, Ranch Manager

Cell 918.244.2118

Office 918.256.9910

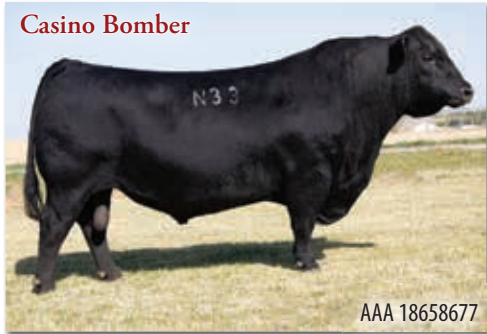
EPDs as of 8/18/21



PO Box 1219 • Edmond, OK 73083  
405.641.6081  
mott@mcsauction.com  
www.mcsauction.com

Offering cattle that Grow, Gain & Grade!

SPURRANCH.COM



65 sons sell along with his service on many cows and heifers. Bomber has excelled for us and those that have used him across the land!



The Spur line continues with Re-Ride, Vermilion Spur E143, Vermilion Spur E119 and Vermilion Spur D125. All Spur sons working in some of the best herds in the country. 40 sons sell.



A new and exciting high-performance sire. Many of the registered heifers, cows and commercial heifers carry his service. PAP EPD -.87 Top 10%, with proven progeny.



Calving ease deluxe! His service is a real feature on the commercial heifers. His calves come right and really PERFORM.

# Vermilion Ranch

## Fall Performance Sale

**SATURDAY, NOVEMBER 27, 2021**

Public Auction Yard, Billings, MT at 11:00 AM (MST)

**2,000 ANGUS SELL**

**330 TOTAL PERFORMANCE BULLS**

**180 Outstanding Fall Yearlings**

The best of our Fall Program! Sired by Casino Bomber, Connealy McIlroy, Vermilion Spur E119, Sitz Commerce, Vermilion Want To and Vermilion Re-Ride.

**150 Big, Stout Coming Two-Year-Olds**

Sired by the same outstanding sires!

All bulls are:

- Genomic tested with  **ANGUSGS**  
Powered by Neogen GeneSeek
- PAP tested

**75 Head Dispersal All 2014 Born Registered Angus Cows**

Bred to Sitz Commerce, Casino Bomber, Deer Valley Growth Fund and Myers Fair-N-Square.

**75 Select Registered Angus Bred Heifers**

AI bred to Sitz Commerce, Connealy King Air and Casino Bomber. Calving in February - March 2022.

**50 Head Dispersal** April calving Registered Angus cows, 2 to 6 years old.

**1,500 Fancy Commercial Angus Bred Heifers**

No where will you find this quality with these numbers. A tremendous set of bred heifers with the best genetics Montana has to offer! AI bred to Connealy King Air, Sitz Commerce and Vermilion Bomber G017 and followed up with Bomber sons! They will calve mostly in February and March 2022. All ultrasound pregnancy tested. AI calves will be sexed. All the heifers will be sorted into short calving periods.



**Vermilion Ranch**

Pat Goggins Family

Bob Cook - Records & Sales  
Cell: 406-670-0078

Jake Kading - Herdsman  
Cell: 406-672-5844

PO Box 30758  
Billings, MT 59107

Jeff Mosher - Vermilion North  
Brandon Mosher - Pryor Creek

Bill Shaules - South Pryor  
Greg Roberts - Diamond Ring

Email: bcook@cattleplus.com  
www.vermilionangus.com



Sale broadcast and videos available online through Northern Livestock Video Auction  
[www.northernlivestockvideo.com](http://www.northernlivestockvideo.com)

VIDEOS OF ALL SALE CATTLE AVAILABLE AFTER NOVEMBER 1 ON [NORTHERNLIVESTOCKVIDEO.COM](http://NORTHERNLIVESTOCKVIDEO.COM)



**KREBS RANCH**

**42<sup>nd</sup> Annual BULL SALE**

2.17.22 | GORDON, NE | 12:30 PM (MST)

**250 HEAD SELL**

ANGUS - SIM X ANGUS - HEREFORD

**ORDER SEMEN ON  
THESE ELITE SIRES TODAY!**



**CAR DON ANNUITY 114**  
REG: 19720973

CED	BW	WW	YW	MILK	\$M	\$B	\$C
11	.9	105	187	37	89	184	328



**KR Mojo**  
REG: 19219146

CED	BW	WW	YW	MILK	\$M	\$B	\$C
12	.9	80	150	24	73	152	270



**KR STORM**  
REG: 19526337

CED	BW	WW	YW	MILK	\$M	\$B	\$C
1	2.7	85	148	19	48	151	244



**KR QUALITY**  
REG: 19219149

CED	BW	WW	YW	MILK	\$M	\$B	\$C
2	2.6	85	160	28	58	149	251



**KR CADILLAC RANCH**  
REG: 18875651

CED	BW	WW	YW	MILK	\$M	\$B	\$C
12	.4	77	143	21	14	158	219



**KR SYNERGY**  
REG: 18875709

CED	BW	WW	YW	MILK	\$M	\$B	\$C
11	-2.0	66	113	21	69	114	217

**KREBSRANCH.COM | 308-282-2021**  
**THINK QUALITY. THINK KREBS.**